

## 2025 PATIENT POSITIONING CATALOG

GLOBAL EDITION

[WWW.KLARITYMEDICAL.COM](http://WWW.KLARITYMEDICAL.COM)



## WELCOME TO **KLARITY**

At Klarity, our goal is to make your work simpler and more effective. Whether you need a complete system or a single component to enhance your setup, our products are designed for seamless integration into your workflow, delivering precision and adaptability without compromise.

We're proud to support you with exceptional customer service and innovative solutions that balance practicality with creativity. From tailored tools to dependable systems, we help you provide the highest standard of care for your patients.

As your partner in cancer care, we deliver solutions built around your unique needs—because no two patients or practices are the same.

**Partner with Klarity today.**

## WHO WE ARE & OUR STORY

At Klarity, we believe every cancer care team deserves a partner who listens, innovates, and delivers. Our journey began in the 1960s with Dr. Lester M. Larson's pioneering work in thermoplastics, which laid the foundation for modern patient positioning. His collaboration with Occupational Therapist Dorothy Kester led to the world's first thermoplastic splints, setting the stage for today's low-temperature thermoplastic materials.

In 1989, Dr. Larson and his son, Peter Larson, founded Larson Medical Products, which later evolved into Klarity Medical Products. In 2000, a groundbreaking partnership began with Dr. Deren Zhan of Guangzhou, China, whose expertise and vision fueled technical advancements and new products. This collaboration led to the development of modern manufacturing technology, and in 2012, Larson Medical Products became Klarity Medical Products LLC, marking the start of a unified vision for Klarity products across the globe.

Today, Klarity collaborates with clinicians worldwide to stay at the forefront of innovation in patient positioning. Our thermoplastics lead the industry with unmatched precision and performance, setting the standard for quality. From custom cushions to advanced positioning tools, Klarity systems are designed to adapt to real-world challenges—easy to use, versatile, and built to improve modern radiation therapy workflows.

We honor our customers, employees, and community by advancing technologies to improve health outcomes globally. At Klarity, we're not just creating products—we're building partnerships.

## WHY KLARITY?

When it comes to patient positioning, Klarity offers more than just tools—we deliver superior solutions. Here's what sets us apart:

### Complete Solutions or Small Upgrades

Whether you need a fully integrated system or a single component, Klarity products provide seamless compatibility and exceptional performance.

### Unmatched Quality and Precision

Crafted with attention to detail, our products offer accuracy, reliability, and comfort for both clinicians and patients.

### Innovative, Thoughtful Design

Every Klarity product reflects a creative, problem-solving approach, offering smarter tools that work the way you need them to.

### Customer Service That Goes Above and Beyond

Klarity is more than just a provider—we're a partner. From fast, responsive support to personalized solutions, we go above and beyond to ensure your success. Whenever you need us, we're here.

When you choose Klarity, you're selecting tools and systems that streamline your workflow, enhance patient care, and deliver the best possible outcomes. That's what makes us your partner in cancer care.

# HOW TO USE THIS CATALOG

## At Klarity, we know clarity matters.

That’s why we’ve designed this catalog to make finding the right positioning solutions as simple as possible.

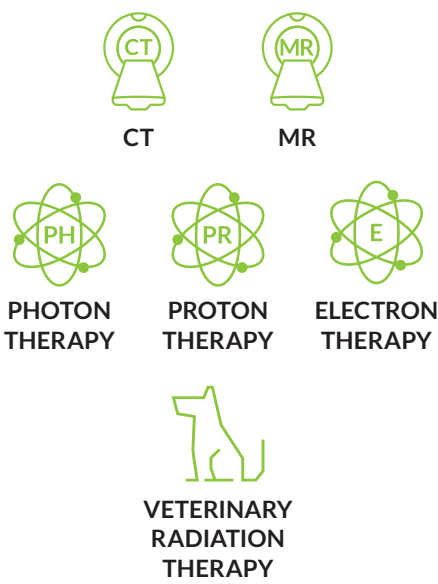
Each product page includes icons that show:

- Treatment Modality Compatibility**  
Which modalities the product supports (e.g., CT, MR, proton, photon).
- Treatment Site Compatibility**  
Where the product is most commonly used (e.g., brain, thorax, pelvis).

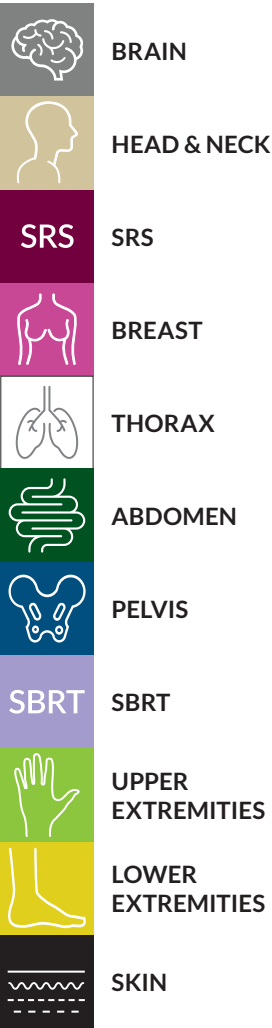
### Here’s how it works:

- Check the **modality icons** to ensure compatibility with your imaging or treatment type.
- Look for the **treatment site icons** to quickly match products to the area of the body you’re treating.

#### Treatment Modalities



#### Treatment Sites



At Klarity, precision and care go hand in hand. This catalog is your guide to solutions that simplify workflows, improve outcomes, and enhance patient comfort.

Whether you need a complete system or a single component, Klarity delivers high-quality tools, exceptional service, and innovative solutions for real-world challenges.

Better tools mean better care—and better care changes lives.

# TABLE OF CONTENTS

- Products by Treatment Modality ..... 2
- Products by Treatment Site..... 5
- Baseplates & Overlays .....29
- Thermoplastic Masks.....49
- Klarity Cushions™ ..... 71
- Vacuum Bags ..... 79
- Accessories..... 85
  - The Klarity BiteLok® .....86
  - Bolus .....88
- Patient Specialized Accessories:
  - Shields..... 90
  - Skin Marking ..... 91
- General Treatment Accessories:
  - Compression Belt..... 92
  - Head Supports ..... 93
  - Indexing Bars ..... 94
  - Table Pads & Wedges ..... 96
  - Straps ..... 97
- Ovens..... 99



# TREATMENT MODALITIES

Every treatment modality requires a unique approach. Klarity’s positioning solutions deliver precision, ease, and compatibility, making your work smoother and patient care better. Discover the tools tailored to your specific modality below.

## CT



Simple, reliable solutions for precise imaging during CT simulation. Perfect for accurate planning across all treatments.

• Baseplates & Overlays .....	Page 29	• Thermoplastic Masks.....	Page 49
Uno™ All-In-One System .....	Page 30	• Klarity Cushions™.....	Page 71
Optek™ S-type Overlay.....	Page 36	• Vacuum Bags.....	Page 79
Optek™ S-type Demi-Baseplate		• The Klarity BiteLok®.....	Page 86
for Elekta HexaPOD™ .....	Page 37	• Bolus .....	Page 88
Optek™ O-type/U-frame Demi-Baseplate		• Patient Specialized Accessories .....	Page 90
for Elekta HexaPOD™ .....	Page 38	Eye Shields .....	Page 90
MultiFix™ Baseplate.....	Page 39	Testicle Shields .....	Page 90
Tilting MultiFix™ Baseplate .....	Page 40	• General Treatment Accessories.....	Page 92
SRS Adaptor.....	Page 41	Compression Belt .....	Page 92
Athena™ Supine Breast System.....	Page 42	Head Supports .....	Page 93
Wingboard .....	Page 44	Indexing Bars .....	Page 94
Leg Positioner .....	Page 45	Table Pads & Wedges .....	Page 96
Foot Positioner .....	Page 46	Straps.....	Page 97
Promise™ Proton Therapy System .....	Page 47		

## MR



MR-compatible systems that offer stability, comfort, and the imaging quality you need, without slowing down the process.

• MR Baseplates & Overlays.....	Page 29	• Thermoplastic Masks.....	Page 49
MR Uno™ All-In-One System.....	Page 30	• Klarity Cushions™.....	Page 71
MR Optek™ S-type Overlay .....	Page 36	• Vacuum Bags (MR Conditional).....	Page 79
SRS Adaptor.....	Page 41	• The Klarity BiteLok®.....	Page 86
MR Athena™ Supine Breast System .....	Page 42	• Bolus .....	Page 88
MR Wingboard.....	Page 44	• General Treatment Accessories .....	Page 92
MR Leg Positioner .....	Page 45	MR Head Supports.....	Page 93
Foot Positioner.....	Page 46	Table Pads & Wedges .....	Page 96
MR Promise™ Proton Therapy System.....	Page 47	Straps.....	Page 97

## PHOTON THERAPY



Flexible, dependable positioning systems for accurate photon-based treatments, from start to finish.

• Baseplates & Overlays .....	Page 29	• Thermoplastic Masks.....	Page 49
Uno™ All-In-One System .....	Page 30	• Klarity Cushions™.....	Page 71
Optek™ S-type Overlay.....	Page 36	• Vacuum Bags.....	Page 79
Optek™ S-type Demi-Baseplate		• The Klarity BiteLok®.....	Page 86
for Elekta HexaPOD™ .....	Page 37	• Bolus .....	Page 88
Optek™ O-type/U-frame Demi-Baseplate		• Patient Specialized Accessories .....	Page 90
for Elekta HexaPOD™ .....	Page 38	Shields.....	Page 90
MultiFix™ Baseplate.....	Page 39	• General Treatment Accessories .....	Page 92
Tilting MultiFix™ Baseplate .....	Page 40	Compression Belt .....	Page 92
SRS Adaptor.....	Page 41	Head Supports .....	Page 93
Athena™ Supine Breast System.....	Page 42	Indexing Bars .....	Page 94
Wingboard .....	Page 44	Table Pads & Wedges .....	Page 96
Leg Positioner .....	Page 45	Straps.....	Page 97
Foot Positioner.....	Page 46		

## PROTON THERAPY



Precision is key in proton therapy, and our solutions deliver the stability needed for accurate beam targeting and effective treatment, all while ensuring patient comfort.

• Baseplates.....	Page 29	• The Klarity BiteLok®.....	Page 86
Leg Positioner .....	Page 45	• Bolus .....	Page 88
Foot Positioner .....	Page 46	• General Treatment Accessories .....	Page 92
Promise™ Proton Therapy System .....	Page 47	Compression Belt .....	Page 92
• Proton Masks .....	Page 68	Indexing Bars .....	Page 94
• Klarity Cushions™.....	Page 71	Table Pads & Wedges .....	Page 96
• Vacuum Bags.....	Page 79	Straps.....	Page 97

## ELECTRON THERAPY



Reliable, stable, and designed for precise surface treatments, our systems ensure consistent, comfortable positioning.

• Baseplates.....	Page 29	• Thermoplastic Masks.....	Page 49
Uno™ All-In-One System .....	Page 30	S-type Masks .....	Page 52
Optek™ S-type Overlay.....	Page 36	O-type Masks .....	Page 58
Optek™ S-type Demi-Baseplate		U-frame Masks .....	Page 60
for Elekta HexaPOD™ .....	Page 37	Breast, Pelvis, and Torso Masks .....	Page 66
Optek™ O-type/U-frame Demi-Baseplate		• Klarity Cushions™.....	Page 71
for Elekta HexaPOD™ .....	Page 38	• Vacuum Bags.....	Page 79
MultiFix™ Baseplate.....	Page 39	• Bolus .....	Page 88
Tilting MultiFix™ Baseplate .....	Page 40	• Patient Specialized Accessories .....	Page 90
Athena™ Supine Breast System.....	Page 42	Eye Shields .....	Page 90
Wingboard .....	Page 44	• General Treatment Accessories.....	Page 92
		Indexing Bars .....	Page 94
		Table Pads & Wedges .....	Page 96

## VETERINARY RADIATION THERAPY



Versatile solutions to meet the unique needs of animal patients, delivering precision and ease for veterinary oncology care.

• Baseplates .....	Page 29	• Klarity Cushions™.....	Page 71
Uno™ All-In-One System .....	Page 30	• Vacuum Bags .....	Page 79
Optek™ O-type/U-frame Demi-Baseplate		• Bolus .....	Page 88
for Elekta HexaPOD™ .....	Page 38	• Patient Specialized Accessories .....	Page 90
MultiFix™ Baseplate.....	Page 39	Eye Shields .....	Page 90
Tilting MultiFix™ Baseplate .....	Page 40	• General Treatment Accessories.....	Page 92
• Thermoplastic Masks .....	Page 49	Indexing Bars .....	Page 94
O-type Masks .....	Page 58	Table Pads & Wedges .....	Page 96
U-frame Masks.....	Page 60	Straps.....	Page 97
Breast, Pelvis, and Torso Masks .....	Page 66		

Thank you so much! I really appreciate it! We love our Klarity oven and masks

– Jennifer

Thank you so much. I enjoyed the talk and appreciate the opportunity for CE's.

– Dana

I greatly appreciate you and these classes!!

– Leila

Thank you so much, I look forward to more.

– Linda

It was very informative!

– Julie

Thank you, it was a great CE class. Thanks for putting it together!!

– Theresa

Very interesting.

– Thomas

Thank you for presenting this [information]. It will be valuable to relay this to our chief therapist and billing folks.

– Mary

I am so happy to have come across this opportunity for education with Klarity.

– Carrie

Awesome class!

Thanks

– Julie

Thank you very much! It was a great class and look forward to more in the future!

– Deborah

Thank you very much! I hope to see more of them in the future.

– Heather

Thanks for your help and for offering these classes!

– Dawn

Thank you very much! It was a great class and look forward to more in the future!

– Deborah

Thank you! Looking forward to the next webinar.

– Pam

Thank you so much!

– Leanne

I look forward to more [webinars] in the future. I appreciate what ya'll do, it's very helpful.

– Tina

Thanks for the great presentation.

– Shanna

Thank you so much, I greatly appreciate it.

– Shannon

Thank you so much! I look forward to the next one.

– Mendy

Thank you, it is a great resource for this student cohort.

– Kelly

Just finished with the presentation and it was wonderful!!

– Deborah

I hope you have a great day today, these CE's have been great!

– Ashley

Thank you so much! I appreciate it. I have been looking for any education on oncology that I could find. It is nice that somebody is doing some education on this.

– Christina

## Free CE Classes

Klarity offers free CE classes every quarter to help you stay sharp and informed. It's just one more way we support clinicians who give their all to patient care.

[www.klaritymedical.com/ce-classes](http://www.klaritymedical.com/ce-classes)

## PRODUCTS BY TREATMENT SITE

Every treatment site requires precision, and our products are designed to deliver just that—easy-to-use, reliable positioning for every part of the body. Find the right solution for your specific needs below.



**Brain:** Precision matters most here. Our brain treatment solutions provide stable, reproducible setups for accurate neurological care.



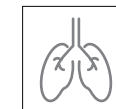
**Head & Neck:** Comfortable, reliable, and secure. Our systems offer the right balance of control and comfort for head and neck treatments.



**SRS:** Designed for precision, our SRS solutions ensure accurate targeting, so you can deliver the highest-quality treatment without complication.



**Breast:** Tailored for comfort and stability, our breast systems offer reliable positioning for supine treatments.



**Thorax:** Providing the support and accuracy needed for chest and lung treatments, our thorax solutions ensure reproducible setups every time.



**Abdomen:** We've got you covered. Our abdominal positioning systems deliver optimal support and flexibility, making treatment more comfortable and precise.



**Pelvis:** Our pelvic tools provide targeted support and stabilization, enhancing accuracy and ease of positioning for reliable treatment.



**SBRT:** High precision, simple to use. Our SBRT system provides reproducible setups for optimal stereotactic body radiation therapy outcomes.



**Upper Extremities:** Secure, adaptable positioning for upper extremities, designed for comfort and ease during treatment.



**Lower Extremities:** Our lower extremity systems offer stability and comfort, ensuring effective positioning for all treatment scenarios.



**Skin:** Our skin positioning tools deliver precise, adaptable support for effective treatments, prioritizing comfort and simplicity for both patients and clinicians.

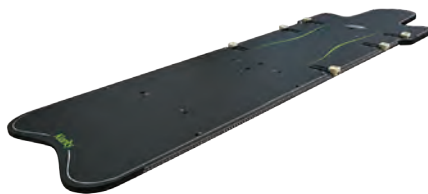
# PRODUCTS BY TREATMENT SITE



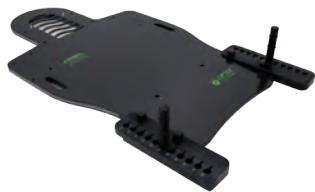
Precision is paramount for treating delicate and complex structures. Our solutions for brain treatments provide stable, reproducible setups for enhanced accuracy in neurological care.

Here are our top recommendations for this treatment site. To see more options and variations, check out the full details on the product pages.

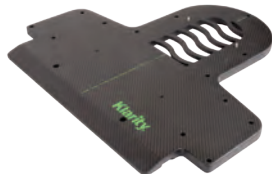
## BASEPLATES



**R616-SCFA**  
Uno™ All-In-One System  
Pg 30



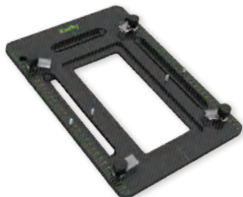
**R630-3SCF**  
Optek™ S-type Overlay  
Pg 36



**R630-SHCF**  
Optek™ S-type Demi-Baseplate for Elekta HexaPOD™  
Pg 37



**R630-OHCF**  
Optek™ O-type/U-frame Demi-Baseplate for Elekta HexaPOD™  
Pg 38



**R605-HCF**  
MultiFix™ Baseplate  
Pg 39



**R605-DCF**  
Tilting MultiFix™ Baseplate  
Pg 40



**R680-ACF**  
Promise™ Proton Therapy System  
Pg 47

## MASKS



**RB461-3210SHT**  
Klarity Blue™ S-type Head Mask  
Pg 52



**R450U**  
Klarity White™ ContourFrame™ Head Mask  
Pg 59



**RG-PH-3242C**  
Klarity Green® Proton-K Head Mask  
Pg 68

## KLARITY CUSHIONS™



**R550-U**  
23cm x 30cm  
Pg 73



**R550-U3**  
23cm x 35cm  
Pg 73



**R550-BOS3**  
48cm x 63cm  
Pg 76

## KLARITY BITELOK®



**RNB-100**  
Pg 86

## EYE SHIELDS



**Eye Shields**  
Pg 90

PRODUCTS BY TREATMENT SITE

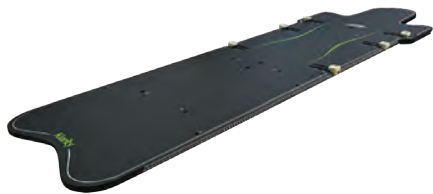


HEAD AND NECK

Designed for comfort and control, our head and neck positioning systems offer reliable immobilization for consistent treatment delivery.

Here are our top recommendations for this treatment site. To see more options and variations, check out the full details on the product pages.

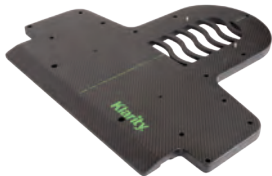
BASEPLATES



**R616-SCFA**  
Uno™ All-In-One System  
Pg 30



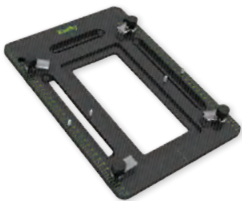
**R630-3SCF**  
Optek™ S-type Overlay  
Pg 36



**R630-SHCF**  
Optek™ S-type Demi-Baseplate for Elekta HexaPOD™  
Pg 37



**R630-OHCF**  
Optek™ O-type/U-frame Demi-Baseplate for Elekta HexaPOD™  
Pg 38



**R605-HCF**  
MultiFix™ Baseplate  
Pg 39



**R605-DCF**  
Tilting MultiFix™ Baseplate  
Pg 40



**R680-ACF**  
Promise™ Proton Therapy System  
Pg 47

MASKS



**RG461-4ST**  
Klarity Green® S-type Head and Shoulder Mask  
Pg 53



**RG461-8STEM**  
Klarity Green® S-type Open Eye and Mouth Head and Shoulder Mask  
Pg 55



**RG461-8STF**  
Klarity Green® S-type Open Face Head and Shoulder Mask  
Pg 55

KLARITY CUSHIONS™



**R550-U**  
23cm x 30cm  
Pg 73



**R550-U3**  
23cm x 35cm  
Pg 73



**R550-T2L**  
46cm x 46cm  
Pg 75



**R550-BOS3**  
48cm x 63cm  
Pg 76

BOLUS



ThermoSheets™  
Pg 89



Bolus Pellets  
Pg 89

KLARITY BITELOK®



**RNB-100**  
Pg 86

EYE SHIELDS



Eye Shields  
Pg 90



PRODUCTS BY TREATMENT SITE



Designed for stereotactic radiosurgery, our products deliver exceptional precision and stability, ensuring accurate targeting for advanced cranial treatments.

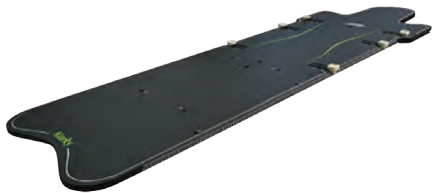
Here are our top recommendations for this treatment site. To see more options and variations, check out the full details on the product pages.

BASEPLATES

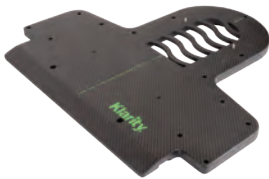


**S-20A**  
SRS Adaptor  
**Pg 41**

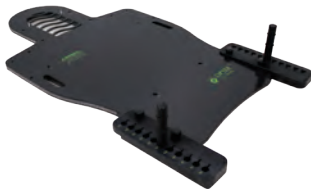
The Klarity SRS Adaptor is designed to fit seamlessly onto a variety of baseplates, making it easy to integrate into your existing setup. Below are some of the compatible baseplates for use with the SRS Adaptor.



**R616-SCFA**  
Uno™ All-In-One System  
**Pg 30**



**R630-SHCF**  
Optek™ S-type Demi-Baseplate for Elekta HexaPOD™  
**Pg 37**



**R630-3SCF**  
Optek™ S-type Overlay  
**Pg 36**

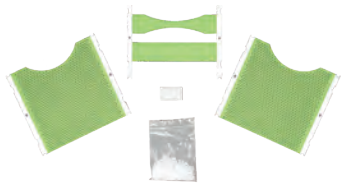
MASKS



**S-2000**  
Klarity Blue™ SRS Open Face Mask Set  
**Pg 60**



**S-2001**  
Klarity Blue™ SRS Mask Set  
**Pg 60**



**RG408-4AC**  
Klarity Green® Stereotactic Head Frame Mask Set, Type B  
**Pg 62**

KLARITY CUSHIONS™



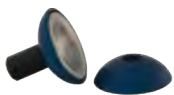
**R550-U2**  
23cm x 30cm  
**Pg 73**

KLARITY BITELOK®



**RNB-100**  
**Pg 86**

EYE SHIELDS



Eye Shields  
**Pg 90**

PRODUCTS BY TREATMENT SITE



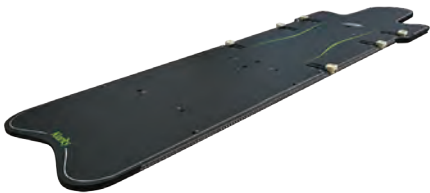
Our breast positioning solutions are tailored for supine treatments, offering exceptional versatility and reliability. Designed for stability and comfort, they ensure precise setups and accommodate a wide range of patient needs.

Here are our top recommendations for this treatment site. To see more options and variations, check out the full details on the product pages.

BASEPLATES



R610-PDCF5  
Athena™ Supine Breast System  
Pg 42



R616-SCFA  
Uno™ All-In-One System  
Pg 30



R616-PC2  
Wingboard  
Pg 44

“Thank you for also being so available for us. I know that whenever I have a Klarity question, I will get a response super fast.”

— Kristin Hurocy, RT(T)  
Stanford Emanuel Radiation Oncology Center  
Turlock, CA

MASKS



R322-5424C1-L  
Klarity White™ Head and Thorax Mask  
Pg 66



R32-2436  
Klarity White™ Athena Breast Mask  
Pg 66

VACUUM BAGS



R7661-20C  
58.5cm x 90cm  
20-liter fill  
Pg 83



R7626-20C  
53cm x 104cm  
20-liter fill  
Pg 83



R7504-30C  
100cm x 70cm  
30-liter fill  
Pg 82



R7644-32.5BC  
136.5cm x 90cm  
32.5-liter fill  
Pg 83

BOLUS



Klarity Bolus™  
Pg 88



ThermoSheets™  
Pg 89

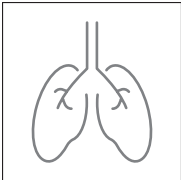
Customer Service That Cares

Customer service is at the heart of everything we do. Whether you need answers, support, or a custom solution, we’re here—ready to listen, respond, and help you get what you need.

sales@klaritymedical.com



PRODUCTS BY TREATMENT SITE

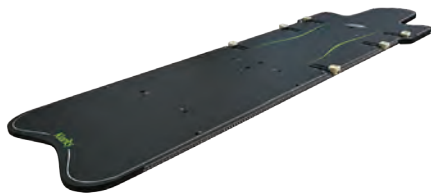


THORAX

Tailored for chest and lung treatments, these systems provide secure and reproducible positioning for improved dosimetric outcomes.

Here are our top recommendations for this treatment site. To see more options and variations, check out the full details on the product pages.

BASEPLATES



**R616-SCFA**  
Uno™ All-In-One System  
Pg 30



**R610-PDCF5**  
Athena™ Supine Breast System  
Pg 42



**R616-PC2**  
Wingboard  
Pg 44

Creativity  
That Solves  
Problems

At Klarity, we approach everything with creativity and a problem-solving mindset. From smarter designs to custom solutions, we think outside the box to help you provide better care with tools that work the way you need them to.

MASKS



**RLG461-11ST**  
Klarity LiteGreen™ S-type  
Shoulder Mask  
Pg 67



**R32-2436**  
Klarity White™ Athena  
Breast Mask  
Pg 66

VACUUM BAGS



**R7661-20C**  
58.5cm x 90cm  
20-liter fill  
Pg 83



**R7626-20C**  
53cm x 104cm  
20-liter fill  
Pg 83



**R7504-30C**  
100cm x 70cm  
30-liter fill  
Pg 82



**R7644-32.5BC**  
136.5cm x 90cm  
32.5-liter fill  
Pg 83

COMPRESSION BELT



**R625-SCF1-5B**  
Pg 92

“Again, Klarity has not just provided me & our center with my request, it is providing the Radiation industry with the best tools to accomplish our needs and the patient’s needs, which is the best immobilization possible.”

—Bob Lemon  
Sutter East Bay Medical Foundation – Sacramento  
Sacramento CA

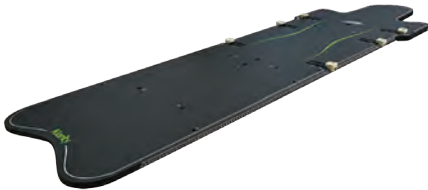
PRODUCTS BY TREATMENT SITE

ABDOMEN

Designed to accommodate the unique challenges of abdominal treatments, our solutions deliver optimal patient support and positioning flexibility.

Here are our top recommendations for this treatment site. To see more options and variations, check out the full details on the product pages.

BASEPLATES



**R616-SCFA**  
Uno™ All-In-One System  
Pg 30



**R616-PC2**  
Wingboard  
Pg 44

MASKS



**RLG902-2436LA**  
Klarity LiteGreen™ Uno™  
Long Torso Mask  
36% perforation  
Pg 66

VACUUM BAGS



**R7661-20C**  
58.5cm x 90cm  
20-liter fill  
Pg 83



**R7401-20C**  
70cm x 70cm  
20-liter fill  
Pg 82



**R7536-30C**  
120cm x 70cm  
30-liter fill  
Pg 82

COMPRESSION BELT



**R625-SCF1-5B**  
Pg 92

“This is one of the reasons why we chose to partner with Klarity. You are always thinking one step ahead, resourceful, responsive, and proactive.”

— Christina Morath, B.S., RT(T)  
Penn Medicine Department of Radiation Oncology  
Doylestown, PA

We don’t just provide products; we work with you. By collaborating with clinics, we develop solutions that address real challenges—whether it’s refining workflows, improving comfort, or tackling unique positioning needs.

Tell us what you need, and we’ll make it happen.  
[info@klaritymedical.com](mailto:info@klaritymedical.com)

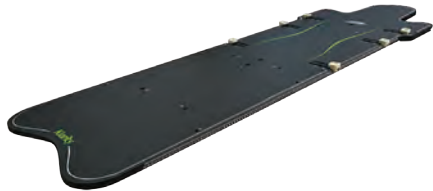
PRODUCTS BY TREATMENT SITE



Our pelvic positioning tools provide targeted support and stabilization, offering versatile solutions to enhance accuracy and reproducibility during treatment.

Here are our top recommendations for this treatment site. To see more options and variations, check out the full details on the product pages.

BASEPLATES



**R616-SCFA**  
Uno™ All-In-One System  
Pg 30



**R634-LCF**  
Leg Positioner  
Pg 45



**R634-LCF-2A**  
Foot Positioner  
Pg 46

MASKS



**RLG902-2436BA**  
Klarity LiteGreen™ Uno™ Pelvic Mask  
Pg 66



**RLG902-3G1**  
Klarity LiteGreen™ HipFix Mask  
Pg 67

KLARITY CUSHIONS™



**R550-L2**  
40cm x 60cm  
Pg 74

VACUUM BAGS



**R7506-40C**  
100cm x 100cm  
40-liter fill  
Pg 82



**R7536-30C**  
120cm x 70cm  
30-liter fill  
Pg 82



**R7524-120C**  
200cm x 100cm  
120-liter fill  
Pg 83

TESTICLE SHIELDS



Testicle Shields  
Pg 90

# PRODUCTS BY TREATMENT SITE

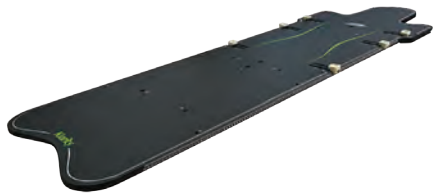
SBRT

SBRT

Our SBRT positioning tools combine precision and ease of use, offering therapist-friendly solutions for accurate and reproducible setups in stereotactic body radiation therapy.

Here are our top recommendations for this treatment site. To see more options and variations, check out the full details on the product pages.

## BASEPLATES



**R616-SCFA**  
Uno™ All-In-One System  
Pg 30

## Caring for the Whole Care Team

At Klarity, we care for the caretakers, too. From improving workflows to creating products that are easier to use and more comfortable for everyone, our solutions are built to make your job a little easier and a lot more effective.

## MASKS



**RLG902-2436TL**  
Klarity LiteGreen™ Uno™  
Thorax Mask  
36% perforation  
Pg 66



**RLG902-2436LA**  
Klarity LiteGreen™ Uno™  
Long Torso Mask  
36% perforation  
Pg 66

## VACUUM BAGS



**R7661-20C**  
58.5cm x 90cm  
20-liter fill  
Pg 83



**R7626-20C**  
53cm x 104cm  
20-liter fill  
Pg 83



**R7644-32.5BC**  
136.5cm x 90cm  
32.5-liter fill  
Pg 83



**R7131-5NLTC**  
Knee Bridge Vacuum Bag  
28cm x 80cm  
5-liter fill  
Pg 83

## COMPRESSION BELT



**R625-SCF1-5B**  
Pg 92



PRODUCTS BY TREATMENT SITE



UPPER EXTREMITIES

Our upper extremity positioning tools provide reliable, adaptable support for effective treatments, ensuring ease and comfort for both patients and clinicians

Here are our top recommendations for this treatment site. To see more options and variations, check out the full details on the product pages.



BASEPLATES



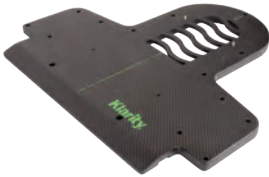
**R605-HCF**  
MultiFix™ Baseplate  
Pg 39



**R605-DCF**  
Tilting MultiFix™ Baseplate  
Pg 40



**R630-3SCF**  
Optek™ S-type Overlay  
Pg 36



**R630-SHCF**  
Optek™ S-type Demi-Baseplate  
for Elekta HexaPOD™  
Pg 37



**R630-OHCF**  
Optek™ O-type/U-frame Demi-  
Baseplate for Elekta HexaPOD™  
Pg 38

MASKS



**RG420E**  
Klarity Green® U-Max™ Wide Face  
Head Mask  
Pg 59



**RDLG105-2412C**  
Klarity LiteGreen™ O-type 3-point  
Head Mask  
Pg 56



**R430UC**  
Klarity White™ EzeFrame™ Head  
Mask  
Pg 59

KLARITY CUSHIONS™



**R550-M**  
20cm x 25cm  
Pg 74



**R550-M2**  
20cm x 25cm  
with double fill  
Pg 74



**R550-L**  
20cm x 40cm  
Pg 74



**R550-L2**  
40cm x 60cm  
Pg 74

VACUUM BAGS



**R7100-01C**  
25cm x 20cm  
1-liter fill  
Pg 82



**R7101-03C**  
40cm x 30cm  
3-liter fill  
Pg 82



PRODUCTS BY TREATMENT SITE

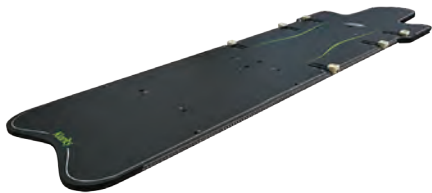


LOWER EXTREMITIES

Our lower extremity positioning systems offer adaptable, stable setups for a wide range of clinical scenarios.

Here are our top recommendations for this treatment site. To see more options and variations, check out the full details on the product pages.

BASEPLATES



**R616-SCFA**  
Uno™ All-In-One System  
Pg 30



**R630-3SCF**  
Optek™ S-type Overlay  
Pg 36



**R634-LCF**  
Leg Positioner  
Pg 45



**R634-LCF-2A**  
Foot Positioner  
Pg 46

“The conversation was great. [We] learned a couple of new tricks that we are excited to try out in our department. I also appreciate that you guys kept it short but informative.”

—Peini Kao, B.S., RT(T)  
Radiation Oncology Eden Medical Center  
Castro Valley, CA

KLARITY CUSHIONS™



**R550-M3**  
23cm x 35cm  
Pg 74



**R550-L**  
20cm x 40cm  
Pg 74



**R550-L2**  
40cm x 60cm  
Pg 74

VACUUM BAGS



**R7106-02.25C**  
50cm x 25cm  
2.25-liter fill  
Pg 82



**R7301-15C**  
70cm x 50cm  
15-liter fill  
Pg 82



Connect.  
Learn.  
Grow.

Our Klarity Conversations happen throughout the year online—covering best practices, product updates, and creative solutions. Join the conversation and see what’s working for others.

[www.klaritymedical.com/events](http://www.klaritymedical.com/events)



PRODUCTS BY TREATMENT SITE

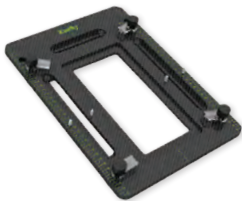
SKIN

Our skin positioning tools deliver precise, adaptable support for effective treatments, prioritizing comfort and simplicity for both patients and clinicians.

Here are our top recommendations for this treatment site. To see more options and variations, check out the full details on the product pages.



BASEPLATES



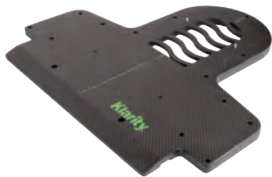
R605-HCF  
MultiFix™ Baseplate  
Pg 39



R605-DCF  
Tilting MultiFix™ Baseplate  
Pg 40



R630-3SCF  
Optek™ S-type Overlay  
Pg 36



R630-SHCF  
Optek™ S-type Demi-Baseplate for Elekta HexaPOD™  
Pg 37



R630-OHCF  
Optek™ O-type/U-frame Demi-Baseplate for Elekta HexaPOD™  
Pg 38



R634-LCF  
Leg Positioner  
Pg 45



R634-LCF-2A  
Foot Positioner  
Pg 46

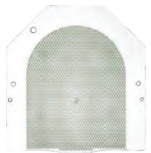
MASKS



RLG461-11ST  
Klarity LiteGreen™ S-type  
Shoulder Mask  
Pg 67



RG420E  
Klarity Green® U-Max™  
Wide Face Head Mask  
Pg 59



R430UC  
Klarity White™ EzeFrame™  
Head Mask  
Pg 59

KLARITY CUSHIONS™



R550-M  
20cm x 25cm  
Pg 74



R550-M2  
20cm x 25cm with double fill  
Pg 74



R550-L  
20cm x 40cm  
Pg 74



R550-L2  
40cm x 60cm  
Pg 74

VACUUM BAGS



R7100-01C  
25cm x 20cm  
1-liter fill  
Pg 82



R7101-03C  
40cm x 30cm  
3-liter fill  
Pg 82

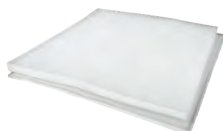


R7106-02.25C  
50cm x 25cm  
2.25-liter fill  
Pg 82



R7301-15C  
70cm x 50cm  
15-liter fill  
Pg 82

BOLUS



Klarity Bolus™  
Pg 88



ThermoSheets™  
Pg 89



Bolus Pellets  
Pg 89

EYE SHIELDS



Eye Shields  
Pg 90



## BASEPLATES & OVERLAYS

### IN THIS SECTION:

Uno™ All-In-One System.....	30
Optek™ S-type Overlay.....	36
Optek™ S-type Demi-Baseplate for Elekta HexaPOD™ .....	37
Optek™ O-type/U-frame Demi- Baseplate for Elekta HexaPOD™ ....	38
MultiFix™ Baseplate .....	39
Tilting MultiFix™ Baseplate .....	40
SRS Adaptor .....	41
Athena™ Supine Breast System.....	42
Wingboard.....	44
Leg Positioner .....	45
Foot Positioner .....	46
Promise™ Proton Therapy System	47





# UNO™ ALL-IN-ONE SYSTEM

## Precision in Every Position

The Klarity Uno™ is an all-in-one, highly customizable baseplate system suitable for all treatment types.

Available in three sizes, the standard version meets most system requirements, while two specialty versions accommodate narrow bore machines and the Elekta HexaPod system. Each size is also available in an MR-compatible version.

The Uno™ Baseplate set includes a headrest adaptor, right and left handgrips, and a groin lock, and is compatible with standard S-type masks as well as Klarity Uno™ Breast, Thorax, and Pelvic Masks. Separate components are available for different treatment sites with all items offered individually.

### INCLUDED:

- Baseplate
- Headrest Adaptor
- Right and Left Lower Hand Grips
- Groin Lock

Each baseplate is equipped with headrest pins for Silverman headrest compatibility, and sliding bars for Uno™ torso and pelvic mask compatibility. All Uno™ Baseplates have receiving holes for S-type Head and Head and Shoulder Masks.

### COMPATIBLE:

S-type Masks	Page 52
Uno™ Breast, Torso, and Pelvic Masks	Page 66
SRS Masks	Page 60
Klarity Cushions™	Page 71
Vacuum Bags	Page 79
Head Supports	Page 93
Indexing Bars	Page 94



# UNO™ ALL-IN-ONE SYSTEM



# KLARITY UNO™

The Uno™ is available in three sizes.






R616-SCFA	R616-SKFA	R616-NCF	R616-NKF	R616-SCF1A	R616-SKF1A
Carbon Fiber	Kevlar <span>MR</span>	Carbon Fiber	Kevlar <span>MR</span>	Carbon Fiber	Kevlar <span>MR</span>
199.5cm (length) x 61cm (shoulder width) x 54cm (body width)	199.5cm (length) x 61cm (shoulder width) x 54cm (body width)	199.5cm (length) x 54cm (shoulder and body width)	199.5cm (length) x 54cm (shoulder and body width)	199.5cm (length) x 61cm (shoulder width) x 47.8cm (body width)	199.5cm (length) x 61cm (shoulder width) x 47.8cm (body width)
Max Load 250kg	Max Load 250kg	Max Load 250kg	Max Load 250kg	Max Load 250kg	Max Load 250kg
5.6kg					

COMPATIBLE	COMPATIBLE	COMPATIBLE
All S-type Head Masks All S-type Head & Shoulder Masks Klarity S-type Pediatric Masks Uno™ Breast, Torso, and Pelvic Masks Silverman Head Support	All S-type Head Masks Uno™ S-type Head & Shoulder Masks (RLG460-2436S5T, R460-2436S5T) Uno™ Breast, Torso, and Pelvic Masks Silverman Head Support	All S-type Head Masks All S-type Head & Shoulder Masks Klarity S-type Pediatric Masks Uno™ Breast, Torso, and Pelvic Masks Silverman Head Support

AVAILABLE COMPONENTS	PRODUCT ID	INCLUDED	UNO™ COMPATIBILITY
	<b>R616-PC2</b> Wingboard (Carbon Fiber)  <b>R616-PK2</b> MR Wingboard (Kevlar)  Compatible with the Athena™ Supine Breast System Can also be placed directly on the couch top	Wingboard T-Bar U-Grip Mask Adaptor Head Support	<input checked="" type="checkbox"/> STANDARD <input checked="" type="checkbox"/> NARROW <input checked="" type="checkbox"/> HEXAPOD
	<b>R616-PC1</b> Overhead Arm Positioner	Overhead Arm Positioner Baseplate 2 Arm Cups 2 Wrist Cups 2 Hand Grips	<input checked="" type="checkbox"/> STANDARD <input checked="" type="checkbox"/> NARROW <input checked="" type="checkbox"/> HEXAPOD
	<b>R616-PC3</b> Tilting Board (Carbon Fiber)  <b>R616-PK3</b> MR Tilting Board (Kevlar)  Tilting Angles: 5°, 10°, 15°, 20°	Tilting Board Base Cushion 2 Lower Handgrips 2 Arm Cups 2 Wrist Cups 2 Upper Hand Grips Upper Indexing Bar Lower Indexing Bar	<input checked="" type="checkbox"/> STANDARD <input checked="" type="checkbox"/> NARROW <input checked="" type="checkbox"/> HEXAPOD Requires one supplemental R616-PDCF-S4 Indexing Bar
	<b>R616-L1</b> Knee Positoner Includes 2 elevation blocks	Knee Positioner Baseplate Knee Cushion 2 Elevation Blocks	<input checked="" type="checkbox"/> STANDARD <input checked="" type="checkbox"/> NARROW <input checked="" type="checkbox"/> HEXAPOD
	<b>R616-L3</b> Foot Positioner	Foot Positioner Baseplate Foot Cushion	<input checked="" type="checkbox"/> STANDARD <input checked="" type="checkbox"/> NARROW <input checked="" type="checkbox"/> HEXAPOD



AVAILABLE COMPONENTS	PRODUCT ID	INCLUDED	UNO™ COMPATIBILITY
	<b>R616-AIR</b> Compression Belt	Compression Belt Hand Pump	<input checked="" type="checkbox"/> STANDARD <input checked="" type="checkbox"/> NARROW <input checked="" type="checkbox"/> HEXAPOD
	<b>R616-PC4</b> Belly Bridge	Belly Bridge Belly Paddle Inflatable Belly Paddle Hand Pump	<input checked="" type="checkbox"/> STANDARD <input checked="" type="checkbox"/> NARROW <input checked="" type="checkbox"/> HEXAPOD
	<b>R616-SCF2-2</b> Knee Bridge	Knee Bridge	<input checked="" type="checkbox"/> STANDARD <input checked="" type="checkbox"/> NARROW <input checked="" type="checkbox"/> HEXAPOD
	<b>R7131-5NLTC</b> Knee Bridge Vacuum Bag 28cm x 80cm 5-liter fill	Knee Bridge Vacuum Bag	<input checked="" type="checkbox"/> STANDARD <input checked="" type="checkbox"/> NARROW <input checked="" type="checkbox"/> HEXAPOD
	<b>R7644-32.5BC</b> SBRT Vacuum Bag 136.5cm x 90cm 32.5-liter fill	Vacuum Bag with Two Chambers and Indexing Bar	<input checked="" type="checkbox"/> STANDARD <input checked="" type="checkbox"/> NARROW <input checked="" type="checkbox"/> HEXAPOD Requires one supplemental RE-616CF Indexing Bar
	<b>RE-616CF</b> Uno™ Lower Indexing Bar Attaches to the top of the Uno™ for Vacuum Bag Indexing	Lower Indexing Bar	<input checked="" type="checkbox"/> STANDARD <input checked="" type="checkbox"/> NARROW <input checked="" type="checkbox"/> HEXAPOD

AVAILABLE COMPONENTS	PRODUCT ID	INCLUDED	UNO™ COMPATIBILITY
	<b>S-20CF</b> SRS Adaptor (Carbon Fiber)  <b>S-20A</b> MR SRS Adaptor (Plastic)	SRS Adaptor	<input checked="" type="checkbox"/> STANDARD <input checked="" type="checkbox"/> NARROW <input checked="" type="checkbox"/> HEXAPOD
	<b>R616-BE5</b> Prone Breast Cushion Set  Can also be placed directly on the couch top	Upper Prone Cushion Tilting Prone Head Support Right and Left Upper Hand Grips Flippable Breast Cushion Lower Prone Cushion with Removable Belly Hole Cushion Foot Rest Cushion Upper Cushion Indexing Bar Lower Cushion Indexing Bar	<input checked="" type="checkbox"/> STANDARD <input checked="" type="checkbox"/> NARROW <input checked="" type="checkbox"/> HEXAPOD Requires two supplemental R616-AE5-SP1 Indexing Bars
	<b>R616-AE5</b> Prone Belly Cushion Set  Can also be placed directly on the couch top	Upper Prone Cushion with Removable Port Cushions Tilting Prone Head Support Right and Left Upper Hand Grips Lower Prone Cushion with Groin Lock and Removable Pelvic Hole Cushion Foot Rest Cushion Upper Cushion Indexing Bar Lower Cushion Indexing Bar	<input checked="" type="checkbox"/> STANDARD <input checked="" type="checkbox"/> NARROW <input checked="" type="checkbox"/> HEXAPOD Requires two supplemental R616-AE5-SP1 Indexing Bars
	<b>R616-CAB</b> Uno™ Storage Cart	N/A	N/A
	<b>R616-BT1</b> Uno™ SBRT Set	Wingboard Belly Bridge Belly Paddle Inflatable Belly Paddle Hand Pump Knee Bridge Knee Bridge Vacuum Bag Knee Positioner Foot Positioner SBRT Vacuum Bag	<input checked="" type="checkbox"/> STANDARD <input checked="" type="checkbox"/> NARROW <input checked="" type="checkbox"/> HEXAPOD

CT

MR

PH

E

36

# OPTEK™ S-TYPE OVERLAY

SRS

SBRT

A comfortable, ergonomic S-board for precise head and neck treatments with multiple mask and head support options

The Klarity Optek™ Overlay is a lightweight, durable S-type baseplate designed for head and neck treatments. Constructed from carbon fiber for superior strength and durability, it is also available in a fiberglass version for MR compatibility. Optimized for IMRT and 360° arc treatments, the board offers excellent attenuation and supports both adult and pediatric masks.

Its tapered design enhances patient comfort, while edge indexing ensures precise and reproducible positioning. Adjustable hand grips allow for consistent and comfortable shoulder retraction, further improving treatment accuracy.

- Enhanced indexing
- Extremely lightweight
- Comfortable shoulder retraction
- Strong and durable



R630-3SCF	R630-3SGF
Carbon Fiber	Fiberglass <span>MR</span>
105cm x 61cm	105cm x 61cm
2.36kg	2.4kg



**INCLUDED:**

Overlay  
Handgrips

**ESSENTIAL:**

RE-630EA or RE-7E  
Klarity Optek™ Indexing Bar Page 94

**COMPATIBLE:**

S-type Masks	Page 52
SRS Adaptor	Page 41
SRS Masks	Page 60
Klarity Cushions™	Page 71
Head Supports	Page 93

# OPTEK™ S-TYPE DEMI-BASEPLATE FOR ELEKTA HEXAPOD™

Reliable positioning for the head, neck, and shoulders

The Optek™ S-type Demi-Baseplate is tailored for the Elekta HexaPOD™ evo RT System and is also ideal for applications requiring S-type masks with a shortened baseplate. Its ultra-lightweight design features a gently tapered end to enhance patient comfort.

Compatible with all standard S-type masks, it uses standard Silverman pins for precise headrest indexing and supports both adult and pediatric configurations.



R630-SHCF
Carbon Fiber
58cm x 61cm
1.18kg



- Tailored for Elekta HexaPOD™ evo RT System
- Ultra-lightweight design
- Compatible with standard S-type masks

**ESSENTIAL:**

RE-630EA or RE-7E  
Klarity Optek™ Indexing Bar Page 94

**COMPATIBLE:**

S-type Masks	Page 52
SRS Adaptor	Page 41
SRS Masks	Page 60
Klarity Cushions™	Page 71
Head Supports	Page 93







# OPTEK™ O-TYPE/U-FRAME DEMI-BASEPLATE FOR ELEKTA HEXAPOD™

A lightweight and versatile solution for O-type and U-frame masks

The Klarity Optek™ O-type/U-frame Demi-Baseplate is designed for the Elekta HexaPOD™ evo RT System and is also ideal for applications requiring a shortened baseplate. It is compatible with all O-type 3-point and 5-point masks, as well as U-frame masks.

Constructed from lightweight carbon fiber, the baseplate features a gently tapered lower section to enhance patient comfort.



R630-OHCF
Carbon Fiber
58cm x 61cm
1.26kg

- Compatible with O-type and U-frame masks
- Lightweight carbon fiber construction
- Tapered design for patient comfort

<b>ESSENTIAL:</b> RE-630EA or RE-7E Klarity Optek™ Indexing Bar	Page 94
<b>COMPATIBLE:</b> O-type Masks U-frame Masks Klarity Cushions™ Head Supports	Page 56 Page 58 Page 71 Page 93

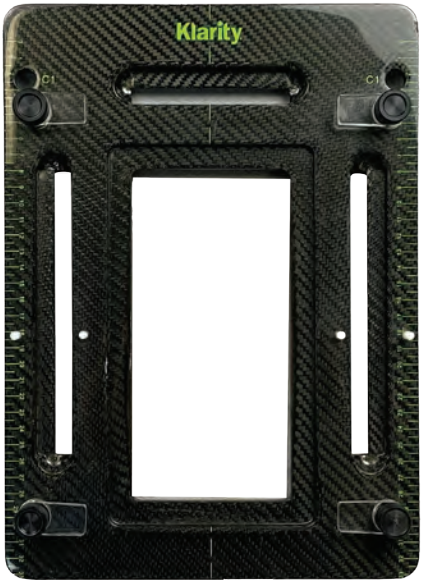


# MULTIFIX™ BASEPLATE

An easy and flexible solution for the head, neck, and extremities

The Klarity MultiFix™ Baseplate offers a lightweight, durable solution for precise positioning. Constructed from strong carbon fiber, it is fully indexable and compatible with both U-frame and O-type 3-point head masks.

The baseplate supports standard Silverman headrests and includes an optional attachment for prone positioning. In addition to supporting head and neck treatments, the MultiFix™ can be used for extremity positioning.



R605-HCF
Carbon Fiber
35.5cm x 25.5cm

- Lightweight and durable
- Compatible with multiple mask types
- Additional indexing along the sides

## ACCESSORY:



**R605-HPCF**  
Prone MultiFix™  
35.8cm x 25.7cm

The Klarity Prone MultiFix™ fits on top of the R605-HCF Baseplate for easy prone positioning. The Prone MultiFix™ is made of lightweight carbon fiber and has cleanable cushions under the forehead and chin.

<b>COMPATIBLE:</b> O-type 3-point Head Masks U-frame Masks Klarity Cushions™ Head Supports	Page 56 Page 58 Page 71 Page 93
--	--



# TILTING MULTIFIX™ BASEPLATE

## A durable, flexible solution for head tilt positioning

The Klarity Tilting MultiFix™ provides a lightweight, durable solution for precise head tilt positioning, ideal for kyphotic patients. Constructed from strong carbon fiber, it is fully indexable and compatible with O-type and U-frame head masks, as well as standard Silverman headrests.

An optional attachment is available for prone positioning.



- Simple to adjust
- Compatible with multiple mask types
- Additional indexing along the sides

COMPATIBLE:	
O-type 3-point Head Masks	Page 56
U-frame Masks	Page 58
Klarity Cushions™	Page 71
Head Supports	Page 93



R602-DCF
Carbon Fiber
35.5cm x 25.5cm
250mm maximum height
Elevation Angles: 5°, 10°, 15°, 20°, 25°, 30°, 35°, 40°, 45°

### ACCESSORY:



**R605-HPCF**  
Prone MultiFix™  
35.8cm x 25.7cm

The Klarity Prone MultiFix™ fits on top of the R605-HCF Baseplate for easy prone positioning. The Prone MultiFix™ is made of lightweight carbon fiber and has cleanable cushions under the forehead and chin.

# SRS ADAPTOR

## Streamlined Integration for Advanced SRS Positioning



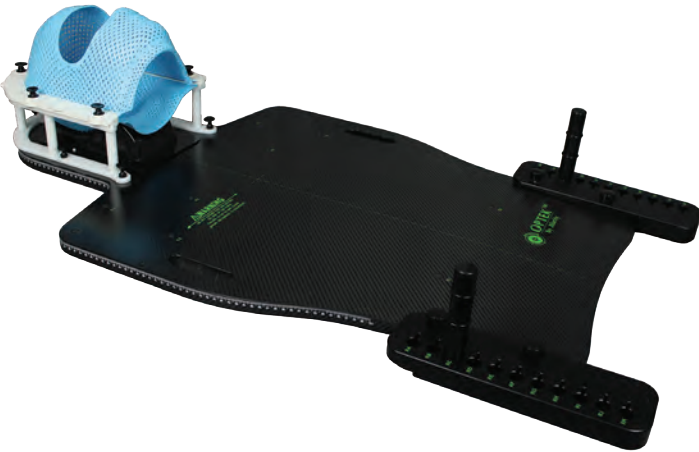
S-20CF	S-20A	S-20B
Carbon Fiber	Plastic	Plastic
30cm x 25cm x 9cm	30cm x 25cm x 9cm	30cm x 25cm x 9cm
Compatible with Klarity S-type Baseplates	Compatible with Klarity S-type Baseplates	Compatible with other S-type baseplates

- Compatible with all S-type Baseplates
- Easy to attach and detach
- Simple and precise

The Klarity SRS Adaptor is an easy-to-use attachment designed to integrate seamlessly with existing S-type baseplates. It clicks into the standard S-type mask holes of the baseplate, functioning just like a mask.

With the adaptor in place, both top and bottom Klarity SRS masks can be securely attached. Mask height is adjustable from 0–4mm at each pin location using the Simple Shim System™, included with Klarity SRS Masks.

This adaptor is an efficient solution for clinics seeking high-precision SRS treatment without the cost or complexity of a full baseplate system. It is compatible with standard S-type baseplates and Silverman head supports.



### COMPATIBLE:

SRS Masks	Page 60
Uno™ All-In-One System	Page 32
Optek™ S-type Overlay	Page 36
Optek™ S-type Demi-Baseplate for Elekta HexaPod™	Page 37
Athena™ Supine Breast System	Page 42
Wingboard	Page 44
All S-type Systems	



# ATHENA™ SUPINE BREAST SYSTEM

## The ultimate versatility for precise, stable supine breast and torso treatments

The Klarity Athena™ Supine Breast System offers advanced solutions for precise supine breast and torso positioning. The Athena™ allows for comprehensive arm positioning possibilities with arm cups, upper hand grips, and lower hand grips for asymmetrical positioning. The included Wingboard can be configured with T-Bar or U-Grip Handles to support customizable shoulder placement. The system also features a securely locking, easily adjustable bum-stop for enhanced stability.

Two Athena™ models are available, each with distinct elevation angles for seamless clinical integration. Both the Athena™ baseplate and Wingboard are compatible with standard S-type head masks, and can also be used with the Klarity SRS Adaptor. Specialized breast and torso masks are also available to meet diverse treatment requirements.



**INCLUDED:**

- Baseplate
- Wingboard with T-Bar and U-Grip Handles
- Headrest
- Mask Adaptor
- Right and Left Upper Arm Support Cups
- Right and Left Upper Hand Grips
- Right and Left Lower Hand Grips
- Adjustable Bum Stop
- Knee Cushion

**COMPATIBLE:**

- |                              |         |
|------------------------------|---------|
| S-type Head Masks            | Page 52 |
| Athena™ Breast & Torso Masks | Page 66 |
| SRS Adaptor                  | Page 41 |
| Vacuum Bags                  | Page 79 |
| Indexing Bars                | Page 94 |

R610-PDCF5	R610-PDCF6	R610-PDKF5	R610-PDKF6
Carbon Fiber	Carbon Fiber	Kevlar	Kevlar
145cm x 41cm	145cm x 41cm	145cm x 41cm	145cm x 41cm
6.3kg	6.44kg	7.75kg	7.89kg
Max Load 200kg	Max Load 200kg	Max Load 200kg	Max Load 200kg
Elevation Angles: 5°, 10°, 15°, 20°	Elevation Angles: 7.5°, 12.5°, 17.5°, 22.5°	Elevation Angles: 5°, 10°, 15°, 20°	Elevation Angles: 7.5°, 12.5°, 17.5°, 22.5°

# ATHENA™ SUPINE BREAST SYSTEM

- Extremely lightweight
- Comprehensive arm placement options
- Compatible with S-type head masks, as well as breast and torso masks



# WINGBOARD

## A versatile solution with customizable arm positioning and mask compatibility

The Klarity Wingboard is an incredibly versatile baseplate and can be used on its own or indexed directly to both the Uno™ All-In-One System and the Athena™ Supine Breast System. An optional Mask Adaptor allows the use of S-type head masks. It also includes both T-Bar and U-Grip adjustable handles for customizable arm placement and enhanced patient comfort.



**INCLUDED:**

- Baseplate
- Mask Adaptor
- T-Bar Handles
- U-Grip Handles

**COMPATIBLE:**

- Uno™ All-In-One System Page 30
- Athena™ Supine Breast System Page 42
- S-type Head Masks Page 52

R616-PC2	R616-PK2
Carbon Fiber	Kevlar
62cm x 57cm	62cm x 57cm
1.78kg	2.14kg



“We are highly satisfied with the quality and support we get from Klarity. We use Klarity devices across our clinics to ensure the best possible care for our patients.”

— Ainsley Niemkiewicz Fillman, DABR  
 Director of Physiscs  
 Advocate Radiation Oncology  
 Fort Myers, FL

# LEG POSITIONER

## A comfortable and adjustable solution for precise lower extremity positioning



The Klarity Leg Positioner provides a comfortable, efficient solution for indexing the lower extremities. Designed to attach to any couch top, it integrates seamlessly with other immobilization systems for compatible positioning. Sturdy foam cushions minimize patient fatigue, while the fully adjustable and indexable foot angles ensures precise alignment.

Acrylic hand grips offer comfortable shoulder suppression, with a ball-and-socket locking mechanism allowing reproducible tension in 5cm increments. The system includes two elevation blocks for customizable height adjustment.

Both the Knee Cushion and Elevation Blocks can also be indexed directly to the couch top.

- Indexable baseplate
- Comfortable and intuitive leg positioning
- Reproducible arm straps

R634-LCF	R634-LGF
Carbon Fiber	Fiberglass
86.4cm x 44.5cm	86.4cm x 44.5cm
295mm maximum height	295mm maximum height
Elevation Angles: 10°, 20°, 30°	Elevation Angles: 10°, 20°, 30°

**INCLUDED:**

- Baseplate
- Knee Cushion
- 2 Elevation Blocks
- Foot Holder
- Arm Straps

**COMPATIBLE:**

- Vacuum Bags Page 79
- Indexing Bars Page 94





# FOOT POSITIONER

An adjustable solution for foot positioning with reproducible alignment

The Klarity Foot Positioner offers a comfortable, efficient solution for indexing the feet. It attaches to any couch top and integrates seamlessly with other immobilization systems for compatible positioning.

The system includes a baseplate, foot holder, and hand grips, with adjustable foot angles ranging from 0–30°. Acrylic hand grips provide comfortable shoulder suppression, while the ball-and-socket locking mechanism ensures reproducible tension in 5cm increments.

- Multiple indexing options
- Easily adjustable angles
- Reproducible arm straps



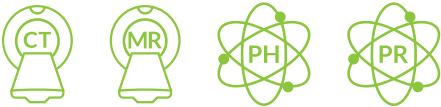
INCLUDED:

Baseplate  
Foot Holder  
Arm Straps

COMPATIBLE:

Indexing Bars

Page 94



R634-LCF-2A
Acrylic
30cm x 49.4cm
290mm maximum height
Elevation Angles: 10°, 20°, 30°

“As for our work with you and Klarity, you have been nothing but great to us! I would definitely recommend your products to others.”

—McKenzie Gemeiner, B.S., R.T.(T)  
US Oncology, Tucson - Craycroft Radiation  
Tucson, AZ

# PROMISE™ PROTON THERAPY SYSTEM

A precise and lightweight proton therapy solution with user-friendly masks



The Klarity Promise™ Proton System features a lightweight baseplate optimized for proton beam treatments. Adjustable hand grips ensure comfortable, ergonomic shoulder retraction. The system is available as a standard carbon-fiber overlay or an insert-style option for direct couch-top treatments, and is also offered in MR-compatible fiberglass.

Compatible with Klarity's Proton-K Masks, which feature our signature Klarity Green® thermoplastic and a straightforward pin attachment, the Promise™ System provides excellent positioning flexibility. Heat-activated Klarity Cushions™ fit securely in the head cup, offering customized support for the cervical spine.

- Smooth, straightforward mask system
- Comfortable shoulder retraction
- Durable and lightweight

R680-ACF	R680-ACFP1	R680-AGF
Carbon Fiber Overlay	Carbon Fiber Insert	Fiberglass Overlay
120cm x 53cm	157cm x 53cm	120cm x 53cm
2.5kg	4.2kg	2.8kg

INCLUDED:

Baseplate  
Handgrips

COMPATIBLE:

Proton-K Masks

Page 68

Klarity Cushions™ for Proton Therapy

Page 76

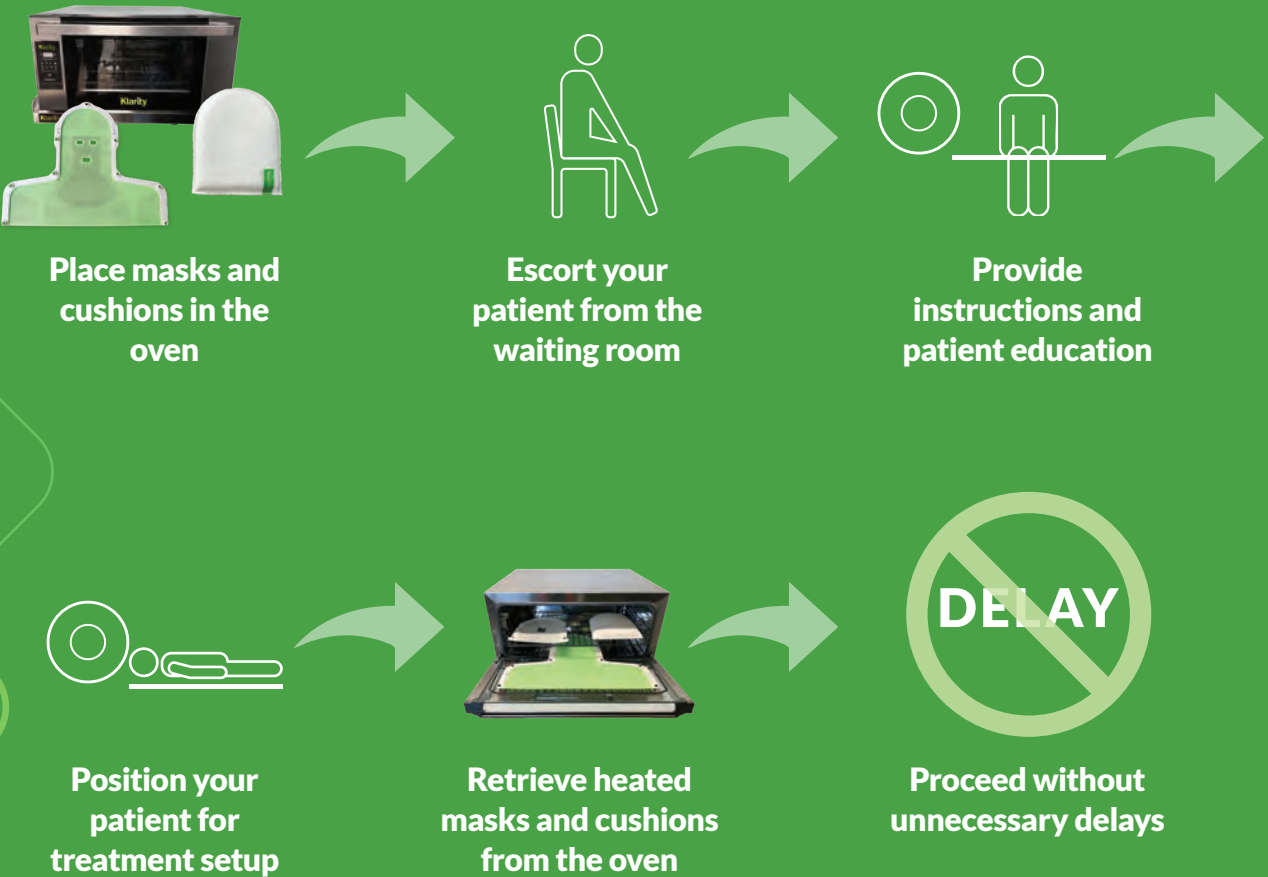
Indexing Bars

Page 94



# Streamline Your Workflow

At Klarity, we know time matters. That’s why our products are designed to simplify your workflow and integrate seamlessly with your existing systems. From faster setups to easy adjustments, Klarity tools help you deliver precise, reliable positioning without added complexity. Because when your work flows better, patient care does too.



## THERMOPLASTIC MASKS

### IN THIS SECTION:

- Klarity Thermoplastic Masks ..... 50
- S-type Head Masks..... 52
- S-type Head & Shoulder Masks.. 53
- S-type Open Face Head Masks .. 54
- S-type Open Face Head & Shoulder Masks..... 55
- O-type Masks ..... 56
- U-frame Masks ..... 58
- SRS Masks..... 60
- V-type Masks ..... 63
- P-type Masks ..... 64
- E-type Masks ..... 65
- Breast, Torso, & Pelvic Masks..... 66
- Proton Therapy Masks ..... 68



# KLARITY THERMOPLASTIC MASKS



Klarity Masks are designed to make every treatment precise, reliable, and efficient. With four advanced thermoplastics—Klarity Blue™, Klarity Green®, Klarity LiteGreen™, and Klarity White™—we offer unmatched strength, reduced shrinkage, and a non-stick coating for easier handling. Each material is optimized for specific frame types and is available in a range of thicknesses, sizes, and perforation patterns to suit diverse clinical needs, ensuring flexibility and accuracy in every setup.

Klarity Masks are easy to prepare, heating at 165°F/73°C in an oven or 160°F/70°C in a water bath. Once warm, the thermoplastic becomes pliable for precise molding and cools to form a rigid, durable fit, delivering consistent performance with every treatment.

## Klarity White™

Available for S-type, U-frame, Stereotactic, P-type and Breast, Torso, and Pelvic Masks

Klarity White™ is our original thermoplastic and continues to be the standard for much of the world today. Klarity White™ has a fast set-up for a strong thermoplastic mask. Klarity White™ is less sticky than other standard thermoplastics.

**Strong**  
**Standard Shrinkage**  
Molding Time:  
**45-60 seconds**  
Cooling Time:  
**8-10 minutes**

## Klarity LiteGreen™

Available for O-type, E-type, Shoulder, and Breast, Torso, and Pelvic Masks

Klarity LiteGreen™ is our preferred thermoplastic for 3- and 5-point systems. It has a non-stick coating, so the edges can be pulled apart if they touch, and it drapes nicely for an incredibly easy molding experience. Klarity LiteGreen™ is only available in 2.4mm with a microperforation pattern, which makes this mask stronger than other reinforced thermoplastic.

**Stronger**  
**Less Shrinkage**  
Molding Time:  
**1-2 minutes**  
Cooling Time:  
**8-10 minutes**

## Klarity Green®

Available for S-type, O-type, U-frame, SRS, V-type, P-type, Breast, Torso, and Pelvic Masks, and Proton Therapy Masks

Klarity Green® is our best selling, signature thermoplastic and is our recommended thermoplastic for most applications. It has less shrinkage and has a non-stick coating, so edges can be pulled apart if they connect. Klarity Green® features a slightly longer working-time (30 extra seconds). This means therapists don't have to rush and can create a more carefully molded mask, which allows for a more comfortable patient experience.

**Stronger**  
**Much Less Shrinkage**  
Molding Time:  
**2-3 minutes**  
Cooling Time:  
**10-12 minutes**

## Klarity Blue™

Available for S-type, O-type, U-frame, SRS, V-type, P-type and Proton Therapy Masks

Klarity Blue™ is our strongest thermoplastic, and is ideal for high-precision applications. It also has the least amount of shrinkage. Our blue masks are the most rigid of any mask, with an extremely high resilience once molded and cooled. Klarity Blue™ also sets up quickly, making this ideal for patients who need limited immobilization time, and the blue material drapes gently for smooth, highly accurate mask making.

**Strongest**  
**Least Shrinkage**  
Molding Time:  
**45-60 seconds**  
Cooling Time:  
**6-8 minutes**





# KLARITY MASKS

## S-TYPE HEAD MASKS



**R461SHT**  
Klarly White™ S-type Head Mask  
42% perforation  
3.2mm



**RG460SHT**  
Klarly Green® S-type Head Mask  
36% perforation  
2.4mm



**RB461-3210SHT**  
Klarly Blue™ S-type Head Mask  
10% perforation  
3.2mm

**RG461SHT**  
Klarly Green® S-type Head Mask  
42% perforation  
3.2mm

**RB460-2410SHT**  
Klarly Blue™ S-type Head Mask  
10% perforation  
2.4mm



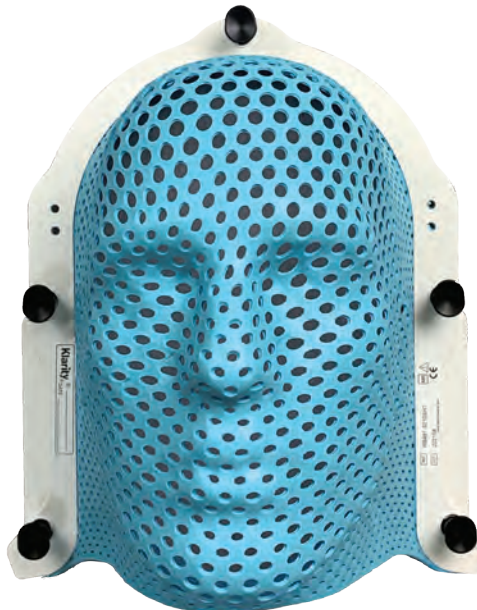
**R461-4SHT**  
Klarly White™ S-type Head Mask  
AccuPerf™  
3.2mm



**RG460-4SHT**  
Klarly Green® S-type Head Mask  
AccuPerf™  
2.4mm



**RG461-5SHT**  
Klarly Green® S-type Extended Head Mask  
AccuPerf™  
3.2mm



### COMPATIBLE:

Uno™ All-In-One System	Page 30
Optek™ S-type Overlay	Page 36
Optek™ S-type Demi-Baseplate for Elekta HexaPod™	Page 37
Athena™ Supine Breast System	Page 42
Wingboard	Page 44
All S-type Systems	



# KLARITY MASKS

## S-TYPE HEAD & SHOULDER MASKS



**R461ST**  
Klarly White™ S-type Head and Shoulder Mask  
42% perforation  
3.2mm



**RG460ST**  
Klarly Green® S-type Head and Shoulder Mask  
36% perforation  
2.4mm



**RB461-3210ST**  
Klarly Blue™ S-type Head and Shoulder Mask  
10% perforation  
3.2mm

**RG461ST**  
Klarly Green® S-type Head and Shoulder Mask  
42% perforation  
3.2mm

**RB460-2410ST**  
Klarly Blue™ S-type Head and Shoulder Mask  
10% perforation  
2.4mm



**R461-4ST**  
Klarly White™ S-type Head and Shoulder Mask  
AccuPerf™  
3.2mm



**RG460-4ST**  
Klarly Green® S-type Head and Shoulder Mask  
AccuPerf™  
2.4mm

**RG461-4ST**  
Klarly Green® S-type Head and Shoulder Mask  
AccuPerf™  
3.2mm



**RG460SC**  
Klarly Green® S-type Pediatric Head and Shoulder Mask  
36% perforation  
2.4mm  
(for R630-3SCF Optek™ S-type Overlay)

**RG461SC**  
Klarly Green® S-type Pediatric Head and Shoulder Mask  
42% perforation  
3.2mm  
(for R630-3SCF Optek™ S-type Overlay)





# KLARITY MASKS

## S-TYPE OPEN FACE HEAD MASKS



R461-8SHTF

Klarity White™ S-type  
Open Face Head Mask  
AccuPerf™  
3.2mm

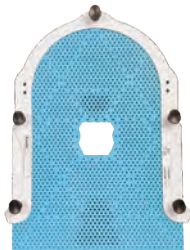
visiønr



RG461-8SHTF

Klarity Green® S-type  
Open Face Head Mask  
AccuPerf™  
3.2mm

visiønr



RB461-6SHTF

Klarity Blue™ S-type  
Open Face Extended Head Mask  
AccuPerf™  
3.2mm

RB460-6SHTF

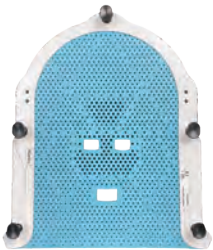
Klarity Blue™ S-type Open Face  
Extended Head Mask  
AccuPerf™  
2.4mm

visiønr



RG461-8SHTM

Klarity Green® S-type  
Open Eye and Mouth Head Mask  
AccuPerf™  
3.2mm



RB461-6SHTM

Klarity Blue™ S-type  
Open Eye and Mouth Head Mask  
AccuPerf™  
3.2mm



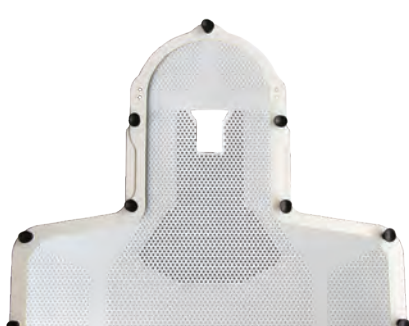
S-type Open Eye and Mouth Head Mask



S-type Open Face Head Mask

# KLARITY MASKS

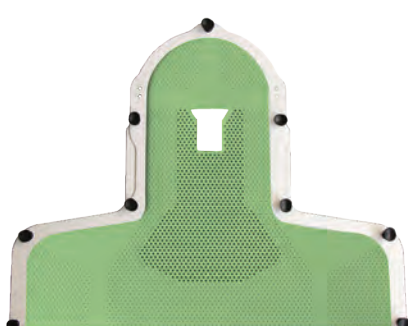
## S-TYPE OPEN FACE HEAD & SHOULDER MASKS



R461-8STF

Klarity White™ S-type Open Face  
Head and Shoulder Mask  
AccuPerf™  
3.2mm

visiønr



RG461-8STF

Klarity Green® S-type  
Open Face Head and Shoulder Mask  
AccuPerf™  
3.2mm

visiønr



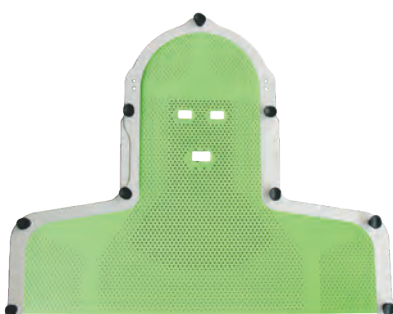
RB461-6STF

Klarity Blue™ S-type  
Open Face Head and Shoulder Mask  
AccuPerf™  
3.2mm

RB460-6STF

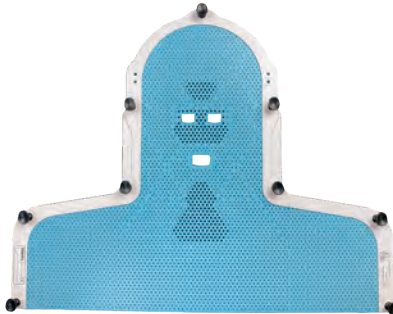
Klarity Blue™ S-type Open Face  
Head and Shoulder Mask  
AccuPerf™  
2.4mm

visiønr



RG461-8STEM

Klarity Green® S-type  
Open Eye and Mouth Head and Shoulder Mask  
AccuPerf™  
3.2mm



RB461-6STEM

Klarity Blue™ S-type  
Open Eye and Mouth Head and Shoulder Mask  
AccuPerf™  
3.2mm

Thank you and your team for providing what I believe every center on the Globe should be using. These are the best masks! SPREAD THE WORD!"

—Bob Lemon  
Sutter East Bay Medical Foundation – Sacramento  
Sacramento CA



# KLARITY MASKS

## O-TYPE 3-POINT HEAD MASKS



**RDG105-24A**  
Klarity Green® O-type 3-point  
Head Mask  
AccuPerf™  
2.4mm



**RDLG105-2412C**  
Klarity LiteGreen™ O-type 3-point  
Head Mask  
12% perforation  
2.4mm



**RDLG105-24AF**  
Klarity LiteGreen™ O-type 3-point  
Open Face Head Mask  
AccuPerf™  
2.4mm

**RDG105-32A**  
Klarity Green® O-type 3-point  
Head Mask  
AccuPerf™  
3.2mm

**RDB105-2410N**  
Klarity Blue™ O-type 3-point  
Head Mask  
10% perforation  
2.4mm

**RDB105-2410F**  
Klarity Blue™ O-type 3-point  
Open Face Head Mask  
10% perforation  
2.4mm

visiφnrt



**RDG107-24A**  
Klarity Green® O-type 3-point  
Rounded Head Mask  
AccuPerf™  
2.4mm

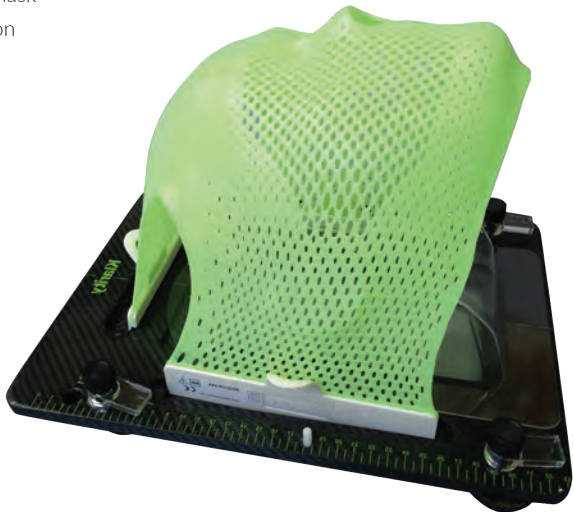


**RDLG107-2412C**  
Klarity LiteGreen™ O-type 3-point  
Rounded Head Mask  
12% perforation  
2.4mm



**RDLG104-2412C**  
Klarity LiteGreen™ O-type 3-point  
Pediatric Head Mask  
12% perforation  
2.4mm

**RDB107-2410N**  
Klarity Blue™ O-type 3-point  
Rounded Head Mask  
10% perforation  
2.4mm



### COMPATIBLE:

Optek™ O-type/U-frame Demi-Baseplate for Elekta HexaPod™	Page 38
MultiFix™ Baseplate	Page 39
Tilting MultiFix™ Baseplate	Page 40
Orfit Systems	



# KLARITY MASKS

## O-TYPE 5-POINT HEAD & SHOULDER MASKS



**RDG207-24A**  
Klarity Green® O-type 5-point  
Head and Shoulder Mask  
AccuPerf™  
2.4mm



**RDLG207-8A24**  
Klarity LiteGreen™ O-type 5-point  
Head and Shoulder Mask  
AccuPerf™  
2.4mm



**RDLG207-24AF**  
Klarity LiteGreen™ O-type 5-point  
Open Face Head & Shoulder Mask  
AccuPerf™  
2.4mm

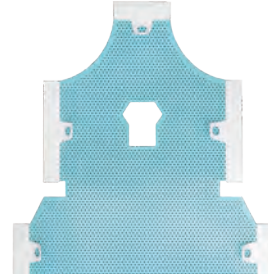
**RDG207-32A**  
Klarity Green® O-type 5-point  
Head and Shoulder Mask  
AccuPerf™  
3.2mm

**RDLG207-8A**  
Klarity LiteGreen™ O-type 5-point  
Head and Shoulder Mask  
AccuPerf™  
3.2mm

visiφnrt



**RDB207-2410N**  
Klarity Blue™ O-type 5-point Head and  
Shoulder Mask  
10% perforation  
2.4mm



**RDB207-2410F**  
Klarity Blue™ O-type 5-point  
Open Face Head and Shoulder Mask  
10% perforation  
2.4mm

visiφnrt



**RDLG204-2412C**  
Klarity LiteGreen™ O-type 5-point  
Pediatric Head and Shoulder Mask  
12% perforation  
2.4mm

“We love that the Klarity masks are not sticky, and they give us a lot more time to correctly mold them to the patient and to customize them. Overall, it’s a much superior product than what we used in the past.”

—Sarah Steffen, BAS., R.T.(T)  
Swedish Cancer Institute – Issaquah  
Issaquah, WA

# KLARITY MASKS

## U-FRAME PROFILEFRAME™ HEAD MASKS



**R420W**  
Klarity White™  
ProfileFrame™ Head Mask  
36% perforation  
2.4mm



**RG420W**  
Klarity Green®  
ProfileFrame™ Head Mask  
36% perforation  
2.4mm



**RG420-1W**  
Klarity Green®  
ProfileFrame™ Head Mask  
AccuPerf™  
2.4mm

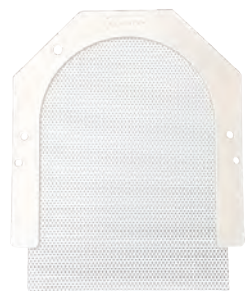


**RB430W-3210**  
Klarity Blue™  
ProfileFrame™ Head Mask  
10% perforation  
3.2mm

**R430W**  
Klarity White™  
ProfileFrame™ Head Mask  
42% perforation  
3.2mm

**RG430W**  
Klarity Green®  
ProfileFrame™ Head Mask  
42% perforation  
3.2mm

**RG430-1W**  
Klarity Green®  
ProfileFrame™ Head Mask  
AccuPerf™  
3.2mm



**R421W**  
Klarity White™ ProfileFrame™  
Extended Head Mask  
36% perforation  
2.4mm



**RG421W**  
Klarity Green® ProfileFrame™  
Extended Head Mask  
36% perforation  
2.4mm



**RG464-1W**  
Klarity Green® ProfileFrame™  
Extended Head Mask  
AccuPerf™  
3.2mm



**RB431W-3210**  
Klarity Blue™ ProfileFrame™  
Extended Head Mask  
10% perforation  
3.2mm

**R431W**  
Klarity White™ ProfileFrame™  
Extended Head Mask  
42% perforation  
3.2mm

**RG431W**  
Klarity Green® ProfileFrame™  
Extended Head Mask  
42% perforation  
3.2mm

Also available with  
Open Face cutout upon request.  
Use ID **RG464-81W**

### COMPATIBLE:

Optek™ O-type/U-frame Demi-Baseplate for Elekta HexaPod™	Page 38
MultiFix™ Baseplate	Page 39
Tilting MultiFix™ Baseplate	Page 40
All U-frame Systems	

# KLARITY MASKS

## U-FRAME HEAD MASKS

### EzeFrame™



**R430UC**  
Klarity White™  
EzeFrame™ Head Mask  
42% perforation  
3.2mm

### ContourFrame™



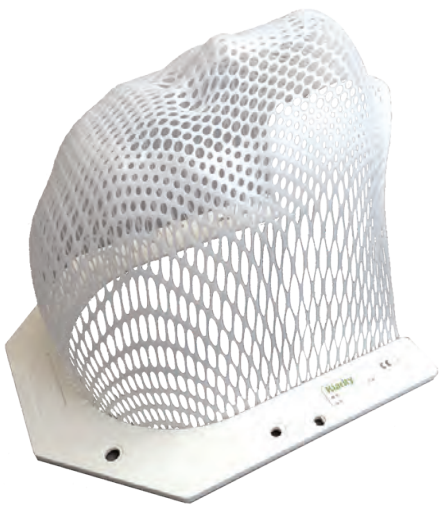
**R450U**  
Klarity White™  
ContourFrame™ Head Mask  
contour perforation  
2.4mm

### U-Max™ Wide Face Masks



**RG420E**  
Klarity Green®  
U-Max™ Wide Face Head Mask  
36% perforation  
2.4mm

**RG430E**  
Klarity Green®  
U-Max™ Wide Face Head Mask  
42% perforation  
3.2mm



## Training Videos at Your Fingertips

Need help? Our training videos are available anytime on our website, with clear, step-by-step instructions to get you up and running fast.

[www.klaritymedical.com/instructional-videos](http://www.klaritymedical.com/instructional-videos)





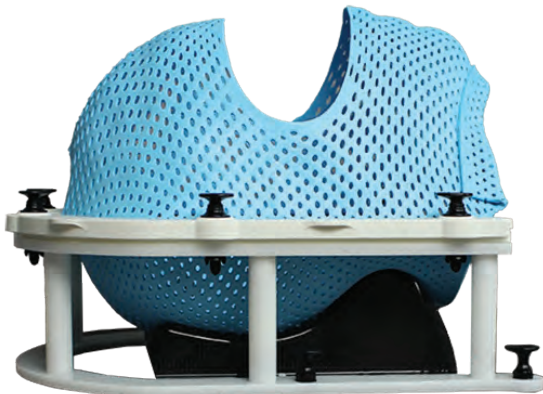
# KLARITY MASKS

## SRS

### Don't get stuck with your SRS Mask!

Klarity SRS Masks provide an extra-strong thermoplastic solution with minimal shrinkage, ensuring precise setups for Stereotactic Radiosurgery.

The two-piece design delivers both anterior and posterior support. Each mask set features removable shims at each pin location, maximizing accuracy and patient comfort with a 0–4 mm range of adjustability. Our premiere Klarity Blue™ thermoplastic offers increased rigidity and stability with the least amount of shrinkage for the most precise treatment alignment.



**S-2000**

Klarity Blue™ SRS Open Face Mask Set  
10% perforation  
3.2mm  
Includes Posterior Mask, Open Face  
Extended Anterior Mask,  
and Simple Shim System™



**S-2001**

Klarity Blue™ SRS Mask Set  
10% perforation  
3.2mm  
Includes Posterior Mask, Extended Anterior Mask,  
and Simple Shim System™



**S-2003**

Klarity Blue™ SRS Open Face Extended Anterior Mask  
10% perforation  
3.2mm  
Includes Extended Anterior Mask  
and Simple Shim System



**RSX-TZ-16**

Klarty SRS Posterior Mask Frame

#### COMPATIBLE:

Klarity SRS Adaptor  
Qfix™ Encompass Systems

Page 41



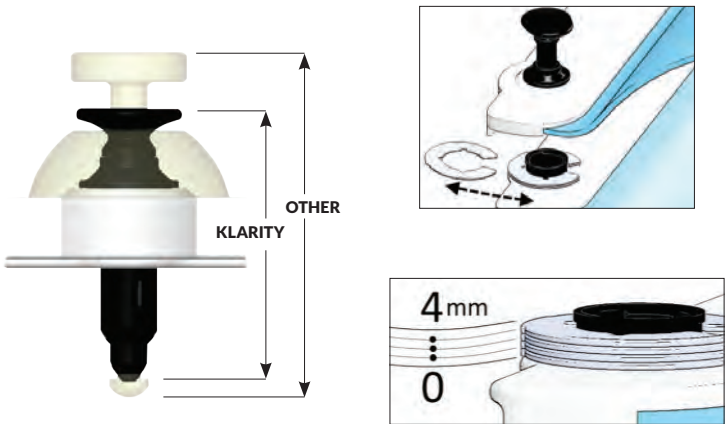
# KLARITY MASKS

## SRS

### Klarity Simple Shim System™

Included with each Klarity SRS Mask

The Simple Shim System™ uses a familiar shimming concept to shim up or down in 1mm increments at each individual pin location. Shims can be added or removed to adjust the height between the posterior and anterior mask from 0mm (no shims) up to 4mm (4 shims). The result is an intuitive shimming technique for secure, customizable treatment.



#### OPTIONAL COMPONENT

The **SRS Single Shim** is placed on the posterior mask and creates an even height across all pin locations in 1mm increments. We recommend starting with 2 shims so you can shim up or down between 0mm-4mm. The Single Shim can be swapped out with the Simple Shim System™.



**R-QST-5**

SRS Single Shim  
1mm



SRS

SBRT



**RG408-4AC**

Klarity Green® Stereotactic  
Head Frame Mask Set  
Type B

**R408**

Klarity White™ Stereotactic  
Head Frame Mask Set  
Type B

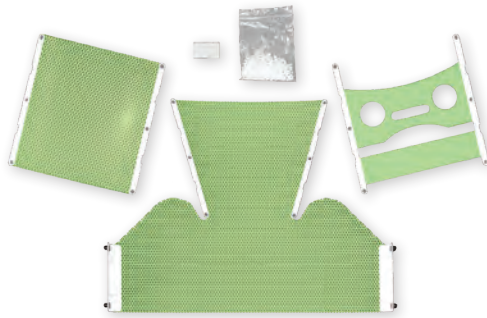


**RG406-1**

Klarity Green® Stereotactic  
Head Frame Mask Set  
Type A

**R406-1**

Klarity White™ Stereotactic  
Head Frame Mask Set  
Type A



**RG408-2**

Klarity Green® Stereotactic  
Head and Shoulder Frame Mask Set  
Type B

**R408-2**

Klarity White™ Stereotactic  
Head and Shoulder Frame Mask Set  
Type B

**INCLUDED:**

Each mask set contains front, middle, and rear masks,  
a support strip, and a packet of thermoplastic pellets.

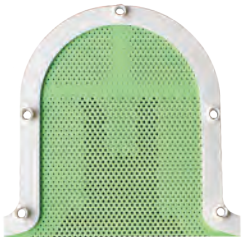
**COMPATIBLE:**

Brainlab Systems



KLARITY MASKS

V-TYPE



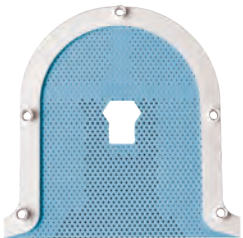
**RG460-4VHT**

Klarity Green® V-type Head Mask  
AccuPerf™  
2.4mm



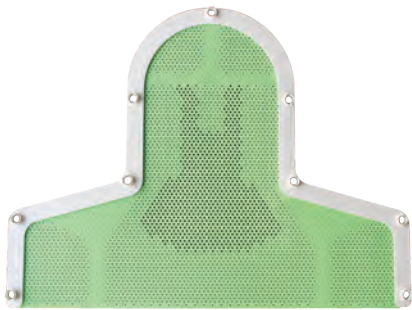
**RB460-2410VHT**

Klarity Blue™ V-type Head Mask  
10% perforation  
2.4mm



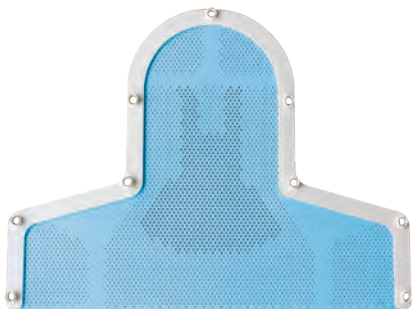
**RB460-6VHTF**

Klarity Blue™ V-type Open Face  
Head Mask  
AccuPerf™  
2.4mm



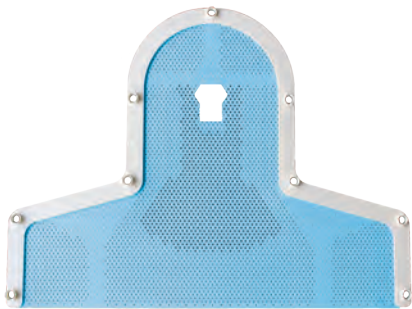
**RG460-4VT**

Klarity Green® V-type Head and Shoulder Mask  
AccuPerf™  
2.4mm



**RB460-2410VT**

Klarity Blue™ V-type Head and  
Shoulder Mask  
10% perforation  
2.4mm



**RB460-6VTF**

Klarity Blue™ V-type Open Face  
Head and Shoulder Mask  
AccuPerf™  
2.4mm

**COMPATIBLE:**

Bionix Versa Systems





# KLARITY MASKS

## P-TYPE



**RG-PRT3-24A**

Klarity Green® P-type 3-point Head Mask

AccuPerf™

2.4mm



**RG-PRT5-24A**

Klarity Green® P-type 5-point Head and Shoulder Mask

AccuPerf™

2.4mm



**RB-PRT3-2410**

Klarity Blue™ P-type 3-point Head Mask

10% perforation

2.4mm

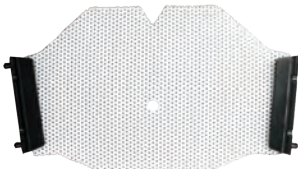


**RB-PRT5-2410**

Klarity Blue™ P-type 5-point Head and Shoulder Mask

10% perforation

2.4mm



**R-PRT2-2415**

Klarity White™ P-type 2-point Head Mask

15% perforation

2.4mm



**R-PRT33-2415**

Klarity White™ P-type 3-point Short Head Mask

15% perforation

2.4mm



**R-PRT3-2415**

Klarity White™ P-type 3-point Head Mask

15% perforation

2.4mm



**R-PRT31-2415**

Klarity White™ P-type 3-point Rounded Head Mask

15% perforation

2.4mm

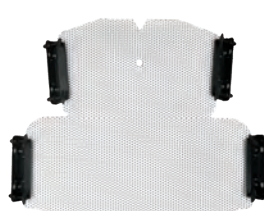


**R-PRT44-2415**

Klarity White™ P-type 3-point Extended Head Mask

15% perforation

2.4mm



**R-PRTL-2415**

Klarity White™ P-type 4-point Head and Neck Mask

15% perforation

2.4mm



**R-PRT55-2415**

Klarity White™ P-type 5-point Narrow Head and Shoulder Mask

15% perforation

2.4mm



**R-PRT5-2415**

Klarity White™ P-type 5-point Head and Shoulder Mask

15% perforation

2.4mm

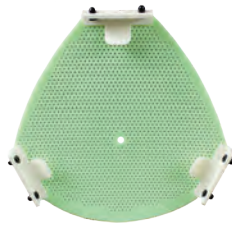
**COMPATIBLE:**

CQ Posifix® Systems



# KLARITY MASKS

## E-TYPE MASKS



**RLG-ESH3-2412C**

Klarity LiteGreen™ E-type Esprit and Icon™ Head Mask with nosehole

12% perforation

2.4mm



**RCLG-ESH3-2412CMB**

Klarity LiteGreen™ E-type Esprit and Icon™ Head Mask with 25mm nosehole

12% perforation

2.4mm



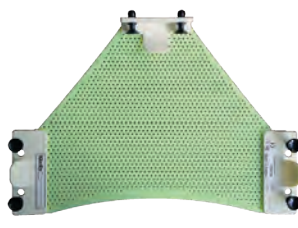
**RCLG-ESH3-2412CN**

Klarity LiteGreen™ E-type Esprit and Icon™ Head Mask with 13mm triangle nosehole

12% perforation

2.4mm

## Masks for Elekta Fraxion™



**RLG-ESH1-2412C \***

Klarity LiteGreen™ E-type Fraxion™ Head Mask

12% perforation

2.4mm



**RLG-ESH2-2412C \***

Klarity LiteGreen™ E-type Fraxion™ Rounded Head Mask

12% perforation

2.4mm

## Masks for Elekta HeadSTEP™

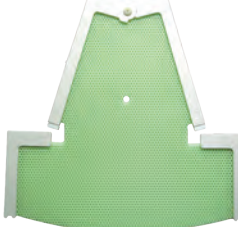


**RLG-ELH-2412CN \***

Klarity LiteGreen™ E-type HeadSTEP™ Head Mask

12% perforation

2.4mm



**RLG-ELS-2412CN \***

Klarity LiteGreen™ E-type HeadSTEP™ Head and Shoulder Mask

12% perforation

2.4mm

**COMPATIBLE:**

Klarity Cushions™ for Elekta Esprit and Icon™ Systems

Elekta's Esprit, Icon™, Fraxion™, and HeadSTEP™ Systems





# KLARITY MASKS

## BREAST, TORSO & PELVIC MASKS

### Uno™ Masks



**RLG322-S42436**

Klarity LiteGreen™ Uno™ Head and Thorax Mask  
36% perforation  
2.4mm  
59cm x 46cm

**R322-S42436**

Klarity White™ Uno™ Head and Thorax Mask  
36% perforation  
2.4mm  
59cm x 46cm



**RLG902-2436LA**

Klarity LiteGreen™ Uno™ Long Torso Mask  
36% perforation  
2.4mm  
59cm x 46cm

**R902-2436LA**

Klarity White™ Uno™ Long Torso Mask  
36% perforation  
2.4mm  
59cm x 46cm



**RLG322-S424C-R**

Klarity LiteGreen™ Uno™ Head and Breast Mask  
Right Side  
36% perforation  
2.4mm  
59cm x 46cm

**R322-S424C-R**

Klarity White™ Uno™ Head and Breast Mask  
Right Side  
36% perforation  
2.4mm  
59cm x 46cm



**RLG902-2436TL**

Klarity LiteGreen™ Uno™ Thorax Mask  
36% perforation  
2.4mm  
41cm x 46cm

**R902-2436TL**

Klarity White™ Uno™ Thorax Mask  
36% perforation  
2.4mm  
41cm x 46cm



**RLG322-S424C-L**

Klarity LiteGreen™ Uno™ Head and Breast Mask  
Left Side  
36% perforation  
2.4mm  
59cm x 46cm

**R322-S424C-L**

Klarity White™ Uno™ Head and Breast Mask  
Left Side  
36% perforation  
2.4mm  
59cm x 46cm



**RLG902-2436BA**

Klarity LiteGreen™ Uno™ Pelvic Mask  
36% perforation  
2.4mm  
56cm x 46cm

**R902-2436BA**

Klarity White™ Uno™ Pelvic Mask  
36% perforation  
2.4mm  
56cm x 46cm

#### COMPATIBLE:

Uno™ All-In-One System Page 30

### Athena™ Masks



**R322-S424C1-L**

Klarity White™ Athena™ Head & Thorax Mask  
Left Side  
2.4mm



**R322-S424C1-R**

Klarity White™ Athena™ Head & Thorax Mask  
Right Side  
2.4mm



**R32-2436**

Klarity White™ Athena™ Breast Mask  
2.4mm

#### COMPATIBLE:

Athena™ Supine Breast System Page 42

# KLARITY MASKS

## BREAST, TORSO & PELVIC MASKS

### Shoulder Mask



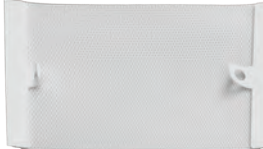
**RLG461-11ST**

Klarity LiteGreen™ S-type Shoulder Mask AccuPerf™  
3.2mm

#### COMPATIBLE:

Uno™ All-In-One System Page 30  
Optek™ S-type Overlay Page 36  
Optek™ S-type Demi-Baseplate for Elekta HexaPod™ Page 37  
All S-type Systems

### O-type Breast & Pelvic Masks



**RD305-3242C**

Klarity White™ O-type 2-point Breast Mask  
42% perforation  
3.2mm  
25cm x 40.8cm

**RD301-3242**

Klarity White™ O-type 2-point Breast Mask  
42% perforation  
3.2mm  
34cm x 23cm



**RD901-2436**

Klarity White™ O-type 4-point Pelvic Mask  
36% perforation  
2.4mm  
46.3cm x 48cm

**RD901-3242**

Klarity White™ O-type 4-point Pelvic Mask  
42% perforation  
3.2mm  
46.3cm x 48cm

#### COMPATIBLE:

Orfit Systems

### PelvicFix™ Masks



**R902-3A**

Klarity White™ PelvicFix™ Mask  
42% perforation  
3.2mm  
46cm x 56cm



**RLG902-3G1**

Klarity LiteGreen™ HipFix Mask  
Reinforced perforation  
3.2mm  
58.8 x 45.7cm

#### COMPATIBLE:

Klarity Classic Series: R606-ACD Klarity PelvicFix™ System  
Civco HipFix System

### Breast Masks



**R91-2436M**

Klarity White™ Pelvic Mask  
36% perforation,  
2.4mm  
46cm x 48cm

**R91-3242M**

Klarity White™ Pelvic Mask  
42% perforation  
3.2mm  
46cm x 48cm

**R91-2400M**

Klarity White™ Pelvic Mask Solid  
2.4mm  
46cm x 48cm

#### COMPATIBLE:

Klarity Classic Series: R611-5SDCF  
Supine Breast System







# KLARITY MASKS

## PROTON THERAPY

### Proton-K Masks



**RG-PH-2436C**

Klarity Green® Proton-K  
Head Mask  
36% perforation  
2.4mm



**RG-PS-2436C**

Klarity Green® Proton-K  
Head and Shoulder Mask  
12% perforation  
2.4mm

**RG-PH-3242C**

Klarity Green® Proton-K  
Head Mask  
42% perforation  
3.2mm

**RG-PS-3242C**

Klarity Green® Proton-K  
Head and Shoulder Mask  
42% perforation  
3.2mm

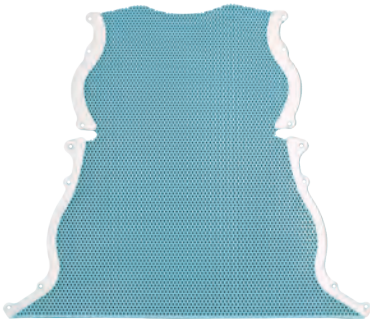
**COMPATIBLE**

Klarity Promise™ Proton System Page 47  
Klarity Cushions™ for Proton Therapy Page 76

“The variety of masks  
offered covers a multitude  
of treatment modalities  
without sacrificing quality,  
reproducibility or comfort.”

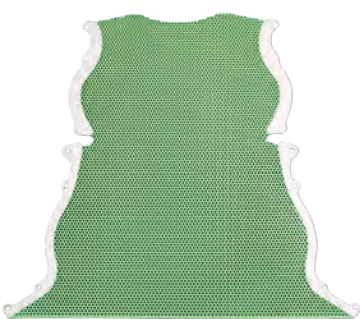
—Ruth Barbir, R.T.(T),  
South Florida Proton Therapy Institute  
Delray, FL

### Proton-B Masks



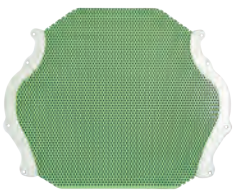
**RB-BSL-3210**

Klarity Blue™ Proton-B  
Large Head and Shoulder Mask  
10% perforation  
3.2mm  
48cm width



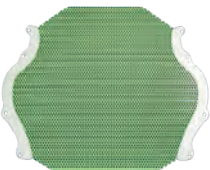
**RG-BSL-3242**

Klarity Green® Proton-B  
Large Head and Shoulder Mask  
42% perforation  
3.2mm  
48cm width



**RG-BHM-3242**

Klarity Green® Proton-B  
Medium Head Mask  
42% perforation  
3.2mm  
31cm width



**RG-BHS-3242**

Klarity Green® Proton-B  
Small Head Mask  
42% perforation  
3.2mm  
26cm width



**RG-BHS-A2436**

Klarity Green® Proton-B  
Pediatric Head Mask  
36% perforation  
2.4mm  
24cm width

**COMPATIBLE**

Qfix BoS™ System





## 5 Reasons Clinics Love Klarity Cushions™

- 1. No Odor** – Clean and odor-free for a better treatment experience.
- 2. No Leaks** – No liquid components, no risk of leaks—ever.
- 3. No Waste** – Heat-activated only, so they’re safe from punctures or torn packaging.
- 4. Easy to Modify** – Simple to adjust, reshape, or refine as needed.
- 5. Customizable** – Easily molded to provide personalized patient support.

## KLARITY CUSHIONS™

### IN THIS SECTION:

Klarity Cushions™ .....	72
Sizes and Specifications .....	73
Specialty Cushions:	
Klarity Cushions™ for Proton Therapy.....	76
Klarity Cushions™ for Elekta Esprit & Icon™ Systems .....	76
Tapered Klarity Cushions™	77
Cushion Accessories .....	77

# KLARITY CUSHIONS™

## Odorless, heat-activated customized support

Klarity Cushions™ provide secure, personalized support for the head, neck, and extremities, making them ideal for cranio-spinal, head and neck, and custom positioning needs. These low-density thermoplastic molds are designed to soften when heated and become firm upon cooling, ensuring precise placement for accurate treatment.

Odorless and dry, Klarity Cushions™ are easy to prepare and offer a working time of 2–4 minutes, fully setting in 5–7 minutes. They are patient-specific but reheatable and reformable, providing exceptional flexibility for therapists. With low attenuation and unmatched comfort, Klarity Cushions™ are a trusted choice worldwide.

Available in various shapes, sizes, and thicknesses, Klarity Cushions™ support a wide range of positioning needs, including head, neck, shoulders, torso, and extremities. Custom designs are also available upon request to meet unique clinical requirements.

- Odorless
- Heat-Activated
- Extremely firm and reproducible
- Remoldable



# KLARITY CUSHIONS™ U-CUSHIONS



KLARITY CUSHIONS™



**R550-S**  
15cm x 20cm



**R550-M**  
20cm x 25cm



**R550-M1**  
23cm x 30cm



**R550-M2**  
20cm x 25cm  
with double fill



**R550-M3**  
23cm x 35cm



**R550-L**  
20cm x 40cm



**R550-L2**  
40cm x 60cm

“Klarity cushions are the best in the game! They can be reshaped if necessary and the extra fill provides the comfort our patients want and need!”

—**Ruth Barbir, R.T.(T)**  
South Florida Proton Therapy Institute  
Delray, FL

KLARITY CUSHIONS™



**R550-T**  
46cm x 41cm



**R550-TL**  
46cm x 46cm



**R550-T2**  
46cm x 41cm  
with additional fill



**R550-T2L**  
46cm x 46cm  
with additional fill



**R550-H1**  
26cm x 35cm



**R550-HS2L**  
46cm x 50cm  
with additional fill

Pediatric  
Klarity Cushion™



**R550-P**  
28cm x 36cm



# KLARITY CUSHIONS™

## SPECIALTY

### Klarity Cushions™ for Proton Therapy



**R550-BOS**  
46cm x 45cm  
with additional fill



**R550-BOS3**  
48cm x 63cm  
with additional fill



**R550-K**  
44cm x 44cm  
with tapered fill



**R550-CM1**  
15cm x 25cm  
with additional fill



**R550-PS**  
16cm x 31cm

### Klarity Cushions™ for Elekta Esprit & Icon™ Systems



**R550-CEL**  
for Elekta Esprit and Icon™ Systems  
17.5cm x 35cm



**R550-CELC**  
for Elekta Esprit and Icon™ Systems  
17.5cm x 35cm  
1/2 fill level



**R550-CELC1**  
for Elekta Esprit and Icon™ Systems  
17.5cm x 35cm  
1/3 fill level

# KLARITY CUSHIONS™

## ACCESSORIES AND TOOLS



**R565-605C**

Klarity Cushion™ Cleanable Strap Set  
for Cushion Molding

The cleanable strap set is a positioning aid that makes it easier for a single therapist to mold a Klarity Cushion™. The straps are made from a comfortable and stretchable material that is easy to clean. Velcro strips attach to the Klarity Cushion™ and sides of the couch, providing comfortable but firm suppression during setup. Straps are used for setup only and should be removed before treatment.

- Each Strap Set comes with the following:
- Two 5cm x 152cm straps
  - Two 15cm x 152cm straps
  - Two adhesive tabs for the couch



**R560-S**

Klarity Shell Mold for S-type and U-frame

**R560-O**

Klarity Shell Mold for O-type

**R560-M**

Klarity Shell Mold for R605-HCF MultiFix™ Baseplate  
The Klarity Shell Mold is a reusable frame for molding the H1 and HS2L Klarity Cushions™. Once the cushion cools within the frame, the Shell Mold should be removed before using a mask. Includes three head sizes for each frame type.

### Tapered Klarity Cushions™



**R550-W1**

31cm x 23cm  
9cm max height  
with tapered fill

# Custom Products Made Easy

From custom mask cutouts to unique vacuum bag and cushion sizes, Klarity makes custom work simple, affordable, and accessible. No stress. Just the right solution for your clinic’s unique needs.

If you need something specific, we’re ready to make it happen. Just ask.

[sales@klaritymedical.com](mailto:sales@klaritymedical.com)

## VACUUM BAGS

### IN THIS SECTION:

- Vacuum Bags ..... 80
- Vacuum Bag Accessories ..... 81
- Sizes and Specifications ..... 82

# VACUUM BAGS

A stronger, more durable vacuum bag



Klarity Vacuum Bags are designed for strength, reliability, and long-term use. A durable, non-permeable nylon shell prevents punctures and tears, ensuring each bag is completely air-tight and leak-proof. Filled with low-density polystyrene mini-spheres, they provide secure, consistent support.

Easy to clean, Klarity Vacuum Bags are built for multi-patient use and require less frequent replacement thanks to their durable construction. Replaceable valves and adaptable connectors ensure compatibility with any vacuum pump, while a corner grommet allows for convenient storage.

## Adaptors

Klarity Vacuum Bags are automatically equipped with valves for use with Klarity or Civco Vacuum Pumps. Please inquire if additional Vacuum Pump adaptors are needed.

### R7800-QAD

Adaptor for QFix™ Vacuum Pump  
Allows QFix™ Pump to be used with Klarity Vacuum Bags

### R7800-QADF

Adaptor for Klarity Vacuum Pump  
Allows Klarity Pump to be used with QFix™ Vacuum Bags

### R7800-EAD

Adaptor for Elekta Vacuum Pump  
Allows Elekta Pump to be used with Klarity Vacuum Bags

### R7800-NAD

Adaptor for Bionix™ Vacuum Pump  
Allows Bionix™ Pump to be used with Klarity Vacuum Bags

### R7800-NADF

Adaptor for Klarity Vacuum Pump  
Allows Klarity Pump to be used with Bionix™ Vacuum Bags

# VACUUM BAGS ACCESSORIES



### KSC-3

Klarity Storage Cart  
45.7cm x 121.9cm x 182.8cm  
The cart holds up to 227 kg (500 lbs), features locking wheels, and includes three adjustable shelves. Movable rungs accommodate vacuum bag grommets for easy storage.



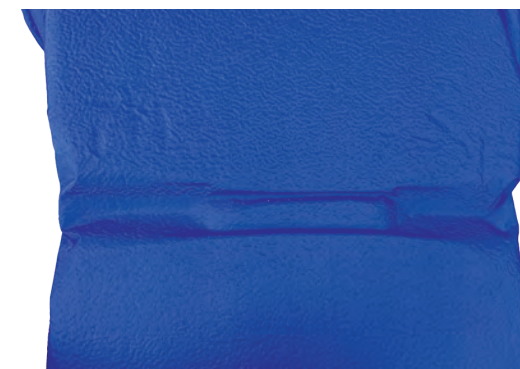
### KVP-500

Klarity Vacuum Pump with AirSwitch™  
220v or 110v  
Includes AirSwitch™, 2 valves, and 2 self-retracting vacuum tubes that are 3m (10ft) in length.



### KVP-100

Klarity AirSwitch™  
The AirSwitch™ is a lightweight handheld control with three settings—In, Hold, and Out—for precise bag adjustments. It connects to your existing vacuum pump and works with all vacuum bag types and valves. Please specify your pump type when ordering.



### R7800-VBI

Vacuum Bag Indexing Bar Set  
Our Vacuum Bag Indexing Bars allows you to transform any vacuum bag into an indexed bag. The Vacuum Bag Indexing Bars attach to your existing indexing bar and features 4 positions so you can easily adjust the indexing width.





# VACUUM BAGS

Klarity Vacuum Bags are available in the following sizes and specifications.  
All bags can be ordered with an indexing bar. Please specify valve type when requesting a quote. Inquire directly for custom sizes.



**R7100-01C**  
25cm x 20cm  
1-liter fill



**R7101-03C**  
40cm x 30cm  
3-liter fill



**R7106-2.25C**  
50cm x 25cm  
2.25-liter fill



**R7301-15C**  
70cm x 50cm  
15-liter fill



**R7401-20C**  
70cm x 70cm  
20-liter fill



**R7506-40C**  
100cm x 100cm  
40-liter fill



**R7504-17.5C**  
100cm x 70cm  
17.5-liter fill



**R7504-30C**  
100cm x 70cm  
30-liter fill



**R7504-35C**  
100cm x 70cm  
35-liter fill



**R7504-35BC**  
100cm x 70cm  
35-liter fill  
with Indexing Bar



**R7505-30C**  
100cm x 80cm  
30-liter fill



**R7536-30C**  
120cm x 70cm  
30-liter fill

# VACUUM BAGS



**R7540-30C**  
150cm x 75cm  
30-liter fill



**R7540-60C**  
150cm x 75cm  
60-liter fill



**R7512-55C**  
150cm x 80cm  
55-liter fill



**R7509-75C**  
150cm x 100cm  
75-liter fill



**R7200-05C**  
50cm x 70cm  
5-liter fill



**R7202-05C**  
67cm x 62cm  
5-liter fill



**R7626-20C**  
53cm x 104cm  
20-liter fill



**R7661-20C**  
58.5cm x 90cm  
20-liter fill



**R7644-32.5BC**  
90cm x 36.5cm  
32.5-liter fill  
with Indexing Bar



**R7131-5NLTC**  
28cm x 80cm  
5-liter fill  
for SBRT Knee Bridge



**R7524-120C**  
200cm x 100cm  
120-liter fill

“During my 20 years of experience in Radiation Oncology, Klarity has become the leader in immobilization devices. Klarity provides products and clinical support that are key to improving patient outcomes and increasing the opportunities to cure cancer. Not only does Klarity make exceptional products, they provide educational opportunities for Radiation Oncologists, Medical Dosimetrists and Radiation Therapists all over the world.”

—Chuck Lemmond, B.S. RT(R)(T)(ARRT)  
College of Veterinary Medicine- Auburn University  
Auburn, AL

## ACCESSORIES

### IN THIS SECTION:

The Klarity BiteLok® .....	86
Bolus .....	88
Patient Specialized Accessories:	
Shields .....	90
Skin Marking.....	91
General Treatment Accessories:	
Compression Belt.....	92
Head Supports .....	93
Indexing Bars .....	94
Table Pads & Wedges.....	96
Straps.....	97

# THE KLARITY BITELOK®

## PRECISION MEETS COMFORT



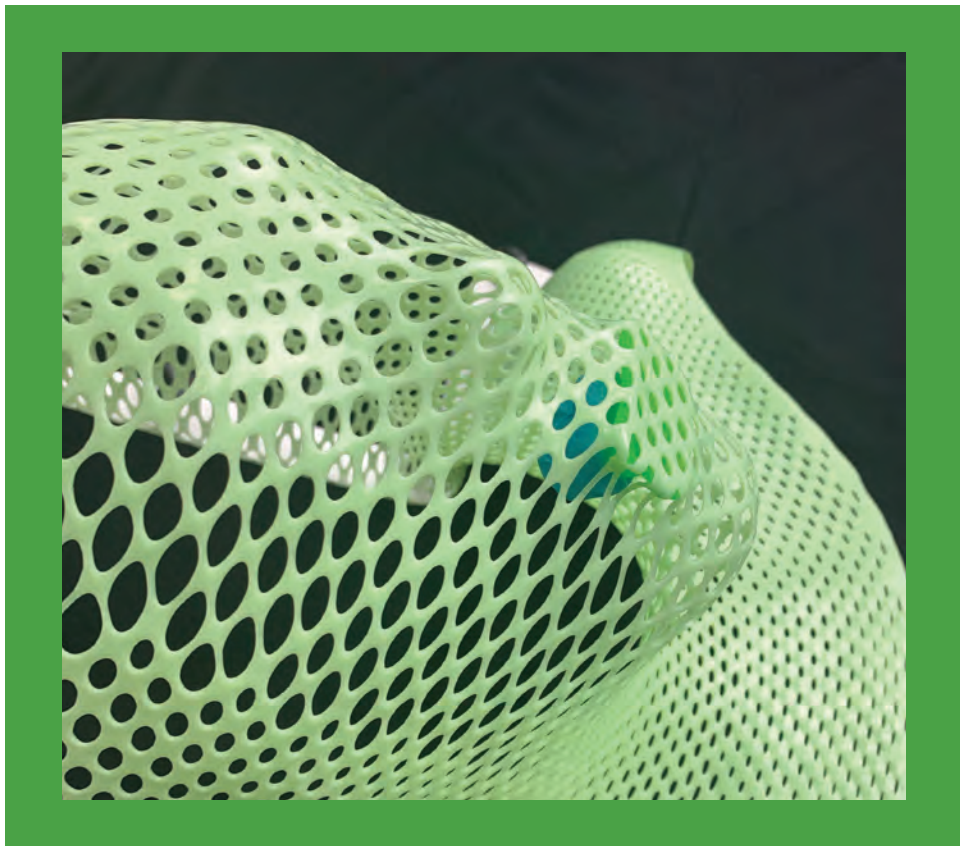
- Breathable, low-profile mouthpiece
- Secure indexing to mask
- Removable for easy cleaning
- Optional tongue depressor/diverter
- Comfortable for smaller mouths

The Klarity BiteLok® is a lightweight, breathable mouthpiece designed for secure and reproducible head and neck positioning. Using fast-setting dental putty—no water or warming required—the BiteLok® quickly indexes to the patient’s mouth. A hands-free Quickfit™ tool molds a thermoplastic mask around the edges of the BiteLok®, creating a precise connection between the patient and the mask. The mouthpiece can be easily removed for cleaning.

With its low-profile design and wide airway passage, the BiteLok® offers superior comfort, even for patients with smaller mouths. It’s an innovative solution for accurate, reliable positioning in head and neck treatments, delivering both precision and patient comfort.



QuickFit™ tool indexing a thermoplastic mask to the BiteLok®



\*For patent information, visit [www.klaritymedical.com/patents](http://www.klaritymedical.com/patents)



# THE KLARITY BITELOK®

## BiteLok® Kit



RNB-100

BiteLok® Kit

The BiteLok® Kit comes as a complete package with all tongue placement options included and contains:

- BiteLok®
- Two Putty Packets
- QuickFit™ Tool
- Short and Long Tongue Depressors
- Right and Left Tongue Diverters
- Tongue Device Removal Tool

## BiteLok®



RNB-10

BiteLok®

The BiteLok® can be ordered as a simplified package containing:

- BiteLok®
- One Putty Packets
- QuickFit™ Tool

## Tongue Placement Kit

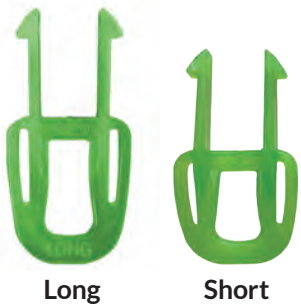
Optional tongue depressors and diverters provide added stability and customization.

### RNB-11

Tongue Placement  
Accessory Kit

The Tongue Placement Accessory Kit also be ordered separately and contains:

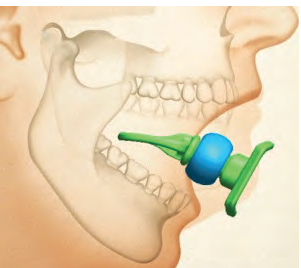
- Short and Long Tongue Depressors
- Right and Left Tongue Diverters
- Tongue Device Removal Tool



Long

Short

### Tongue Depressors



The BiteLok® offers optional tongue depressors and diverters for added stabilization and mouth placement options. These devices snap securely into place and are easily removed using the included removal tool.

### RNB-50

Supplemental Putty Packet



Left

Right

### Tongue Diverters





# BOLUS

Klarity offers four types of standard bolus:

<b>Klarity Bolus™:</b> a filmless, gel-based bolus with the optimal amount of stickiness	<b>Bolx™ Bolus:</b> a tissue-equivalent bolus encased in a layer of polyethylene skin	<b>Bolus Pellets:</b> heat-activated pellets ideal for irregular contours, such as the nose or ear	<b>Klarity ThermoSheets™:</b> easy to form, heat-activated thermoplastic sheets for bolus applications
---	--	---	---

## Klarity Bolus™

Klarity Bolus™ is a filmless, tissue-equivalent bolus designed for radiation therapy. Its flexibility allows it to conform closely to the patient's anatomy, and it has just the right amount of tackiness for a secure fit. The bolus is translucent, enabling clear visualization of portal marks, treatment areas or lesions underneath.

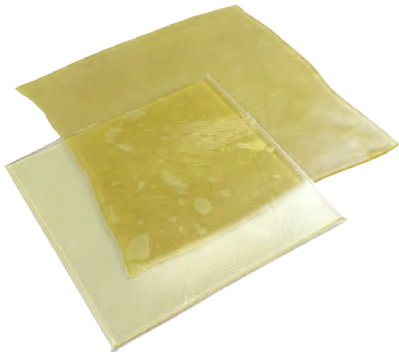
Klarity Bolus™ can be cut or layered to achieve the desired thickness, and is constructed from silicone gel reinforced with a thin polyester mesh, providing both dimensional stability and reliable performance in every application.



<b>RKB-3003</b> 30cm x 30cm 3mm	<b>RKB-4005</b> 40cm x 40cm 5mm
<b>RKB-3005</b> 30cm x 30cm 5mm	<b>RKB-4010</b> 40cm x 40cm 10mm
<b>RKB-3010</b> 30cm x 30cm 10mm	

## Bolx™ Bolus

Bolx™ Bolus is tissue-equivalent flexible build up materials. It is designed to increase the surface dose and offers excellent conformity to body contours. Bolx™ is made of a cured transparent gel and is encased in a layer of polyurethane skin.



<b>KAC-31033030</b> 30cm x 30cm 3mm	<b>KAC-31102</b> 30cm x 30cm 10mm
<b>KAC-31034040</b> 40cm x 40cm 3mm	<b>KAC-31152</b> 30cm x 30cm 15mm
<b>KAC-31052</b> 30cm x 30cm 5mm	<b>KAC-31202</b> 30cm x 30cm 20mm

# BOLUS

## Bolus Pellets

Klarity Bolus Pellets are an ideal choice for custom bolus applications. Once heated in an oven or water bath, they become transparent and easy to mold into any desired shape—particularly useful for areas like the nose and ear. Their dosimetric properties match those of conventional mask thermoplastics, ensuring consistent coverage and accurate dose delivery.



<b>R-601</b> 1lb jar	<b>R-603</b> 3lb jar
-------------------------	-------------------------

## ThermoSheets™

Klarity ThermoSheets™ are thermoplastic sheets for bolus applications, available in both solid and perforated patterns. They can be molded like a standard thermoplastic mask, making them ideal for treating irregular contours. Heated in an oven or water bath, ThermoSheets™ are easy to handle and form, with dosimetric properties matching conventional thermoplastic masks.



Solid	
<b>R-1600A</b> 46cm x 61cm 1.6mm	<b>R-4000A</b> 46cm x 61cm 4.0mm
<b>R-3200A</b> 46cm x 61cm 3.2mm	<b>R-4000E</b> 15cm x15cm 4.0mm
<b>R-3200</b> 92cm x 61cm 3.2mm	<b>R-4000F</b> 30cm x 30cm 4.0mm
Perforated	
<b>R-2436A</b> 46cm x 61cm 36% perforation 2.4mm	<b>R-3242A</b> 46cm x 61cm 42% perforation 3.2mm
<b>R-2436</b> 92cm x 61cm 36% perforation 2.4mm	<b>R-3242</b> 92cm x 61cm 42% perforation 3.2mm

# PATIENT SPECIALIZED ACCESSORIES

## SHIELDS

### Eye Shields

Klarity offers Eye Shields with lower transmission than other eye shields to protect the patient's lens during radiation therapy. Each Tungsten Eye Shield comes with both a 0.5 mm and 1 mm anodized aluminum cap to reduce electron backscatter. The shield can also be used without a cap for more superficial treatments. Please visit our website for full product dimensions and specifications.



<b>KRP-936-583</b> Extra-Small Tungsten Eye Shield with Aluminum Caps 2mm	<b>KRP-936-598</b> Small Tungsten Eye Shield with Aluminum Caps 3mm	<b>KRP-936-589</b> Large Tungsten Eye Shield with Aluminum Caps 2mm	<b>KRP-936-627</b> Extra-Large Tungsten Eye Shield with Aluminum Caps 3mm
<b>KRP-936-596</b> Extra-Small Tungsten Eye Shield with Aluminum Caps 3mm	<b>KRP-936-587</b> Medium Tungsten Eye Shield with Aluminum Caps 2mm	<b>KRP-936-623</b> Large Tungsten Eye Shield with Aluminum Caps 3mm	
<b>KRP-936-585</b> Small Tungsten Eye Shield with Aluminum Caps 2mm	<b>KRP-936-601</b> Medium Tungsten Eye Shield with Aluminum Caps 3mm	<b>KRP-936-591</b> Extra-Large Tungsten Eye Shield with Aluminum Caps 2mm	

### Testicle Shield Stand

Both sets of shields should be used with the adjustable stand.



**KRP-926-100**  
Adjustable Testicle Shield Stand  
25.4cm x 12.7cm x 34.29cm  
10.6lbs

### Lead Testicle Shields

The Lead Testicle Shields are designed with a tongue and groove interlock to eliminate radiation leakage. The top and bottom halves can be secured together with two rubber straps (supplied with each unit) or with nylon tape. Rotating the entrance of the shield toward the ceiling will reduce scatter radiation from entering the shield. No rubber straps are needed if using the adjustable stand.



<b>KRP-928-200</b> Small Lead Testicle Shield Inner Diameter: 5.09cm Outer Diameter: 7.65cm Opening: 1.53cm x 3.19cm 1.27cm lead wall	<b>KRP-928-250</b> Medium Lead Testicle Shield Inner Diameter: 6.37cm Outer Diameter: 8.92cm Opening: 1.91cm x 4.08cm 1.27cm lead wall	<b>KRP-928-300</b> Large Lead Testicle Shield Inner Diameter: 7.65cm Outer Diameter: 10.2cm Opening: 2.55cm x 5.09cm 1.27cm lead wall
--	---	--

### CT Testicle Shields

CT Testicle Shields are made of blue silicone rubber with shore hardness of 50A.



<b>KRP-926-200</b> Small CT Testicle Shield Inner Diameter: 5.09cm Outer Diameter: 7.65cm Opening: 1.53cm x 3.19 cm	<b>KRP-926-250</b> Medium CT Testicle Shield Inner Diameter: 6.37cm Outer Diameter: 8.92cm Opening: 1.91cm x 4.08cm	<b>KRP-926-300</b> Large CT Testicle Shield Inner Diameter: 7.65cm Outer Diameter: 10.2cm Opening: 2.55cm x 5.09cm
---	---	--

# PATIENT SPECIALIZED ACCESSORIES

## SKIN MARKING

### Steriatt

Klarity offers SteriTatt, the first medical marking device created specifically for radiation therapy. This single-use solution supports precision treatment and features sterile, non-toxic, low-allergy ink.

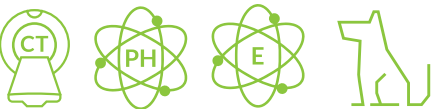
<b>KST-90001</b> SteriTatt Black Ink Cartridge 25 per box	<b>KST-90015</b> SteriTatt Pink Ink Cartridge 25 per box
<b>KST-90002</b> SteriTatt Black Ink Cartridge with Needle 25 per box	<b>KST-90050</b> SteriTatt Black Ink Dropper. 3CC. 10 droppers per box



### SureMark®

Precision Skin Marking Systems

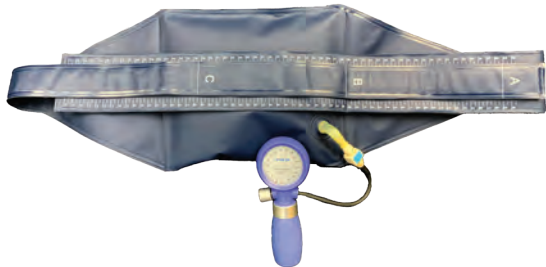
Klarity offers a full line of SureMark® labels and markers, including nonmetallic, semi-lucent, and liquid fiducial markers. Please visit [www.klaritymedical.com/suremark](http://www.klaritymedical.com/suremark) to see the full availability of SureMark® labels.





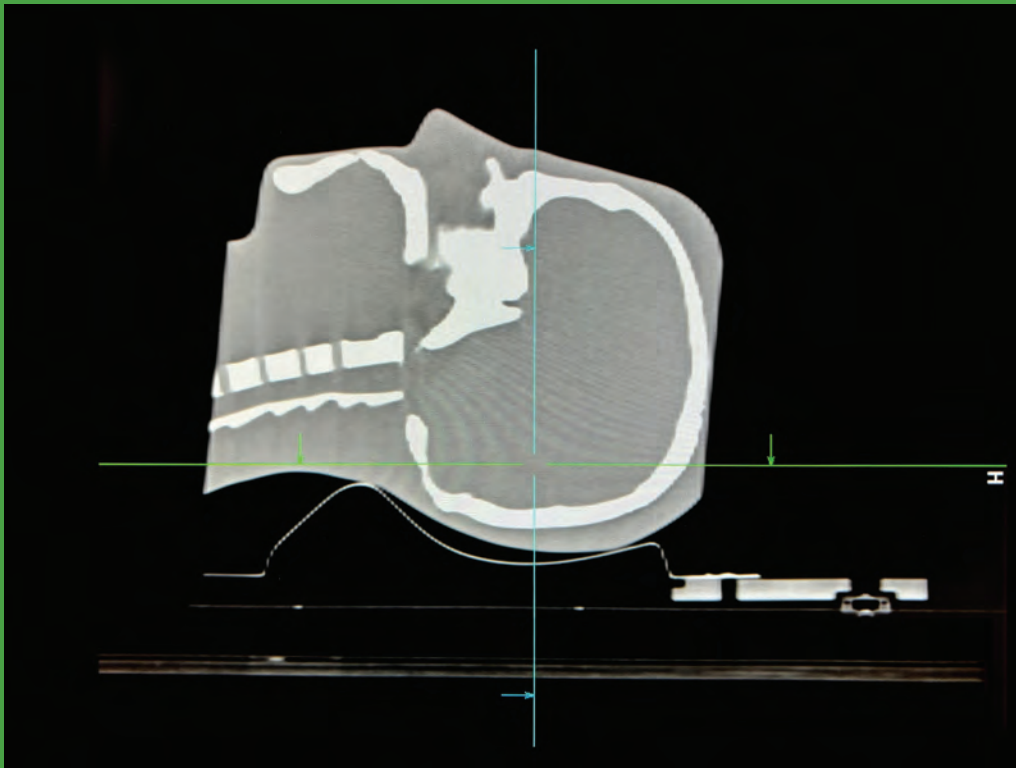
# GENERAL TREATMENT ACCESSORIES

## COMPRESSION BELT



**R6245-SCF1-5B**  
Compression Belt  
183cm x 22cm

- Easy to clean
- Adjustable to accommodate many different body types
- Easy-to-use release button on the pump
- All-in-one design with no assembly required



Carbon Fiber Head Support

# GENERAL TREATMENT ACCESSORIES

## HEAD SUPPORTS

### Carbon Fiber Head Support

Klarity Carbon Fiber Head Supports deliver superior strength and a lightweight design, easily indexing with any standard Silverman pins. Order them individually or as a set of six to cover every height your setup requires.



- R507-CF**  
Carbon Fiber Head Support Set of 6
- R507-ACF**  
Carbon Fiber Head Support A
- R507-BCF**  
Carbon Fiber Head Support B
- R507-CCF**  
Carbon Fiber Head Support C
- R507-DCF**  
Carbon Fiber Head Support D
- R507-ECF**  
Carbon Fiber Head Support E
- R507-FCF**  
Carbon Fiber Head Support F

### Silverman Head Support

Klarity Clear Silverman Head Supports fit a variety of couches and tabletops. Order them individually or as a set of six for a complete range of height options.



- R507**  
Silverman Head Support Set of 6
- R507-A**  
Silverman Head Support A
- R507-B**  
Silverman Head Support B
- R507-C**  
Silverman Head Support C
- R507-D**  
Silverman Head Support D
- R507-E**  
Silverman Head Support E
- R507-F**  
Silverman Head Support F

### Prone Head Support

Klarity Prone Head Support provides comfortable prone positioning by supporting the forehead, cheeks, and chin while reducing pressure around the eyes, nose, and mouth. Its cushion is mounted on an acrylic plate that indexes to standard Silverman pins, offering compatibility with any baseplate using Silvermans.



**R520**  
Prone Head Support





# GENERAL TREATMENT ACCESSORIES

## INDEXING BARS



**RNE-100AL**  
Turn-Lock Aluminum Indexing Bar  
3.2mm thickness  
Compatibility: Exact™ Couch Top



**RNE-102AL**  
Press-Lock Aluminum Indexing Bar  
3.2mm thickness  
Compatibility: Exact™ Couch Top



**RNE-103AL**  
Insert-Lock Aluminum Indexing Bar  
3.2mm thickness  
Compatibility: iBEAM®, Novalis, and TomoTherapy® Couch Tops



**RNE-104AL**  
C-Lock Aluminum Indexing Bar  
3.2mm thickness  
Compatibility: Civco GE CT Couch Top



**RNE-104CLP**  
Low-Profile C-Lock Aluminum Indexing Bar  
3.2mm thickness  
Compatibility: Civco GE CT Low-Profile Thin Couch Top



**RNE-106AL**  
Press-Lock Aluminum Indexing Bar  
3.2mm thickness  
Compatibility: Exact™ 48cm Couch Top



**RE-6E**  
Universal Aluminum Indexing Bar  
3.2mm thickness  
490-535 mm range  
Compatibility: All Couch Tops



**RE-7**  
Aluminum Indexing Bar  
6mm thickness  
Compatibility: Varian Truebeam Couch Tops

### Optek™ Indexing Bars

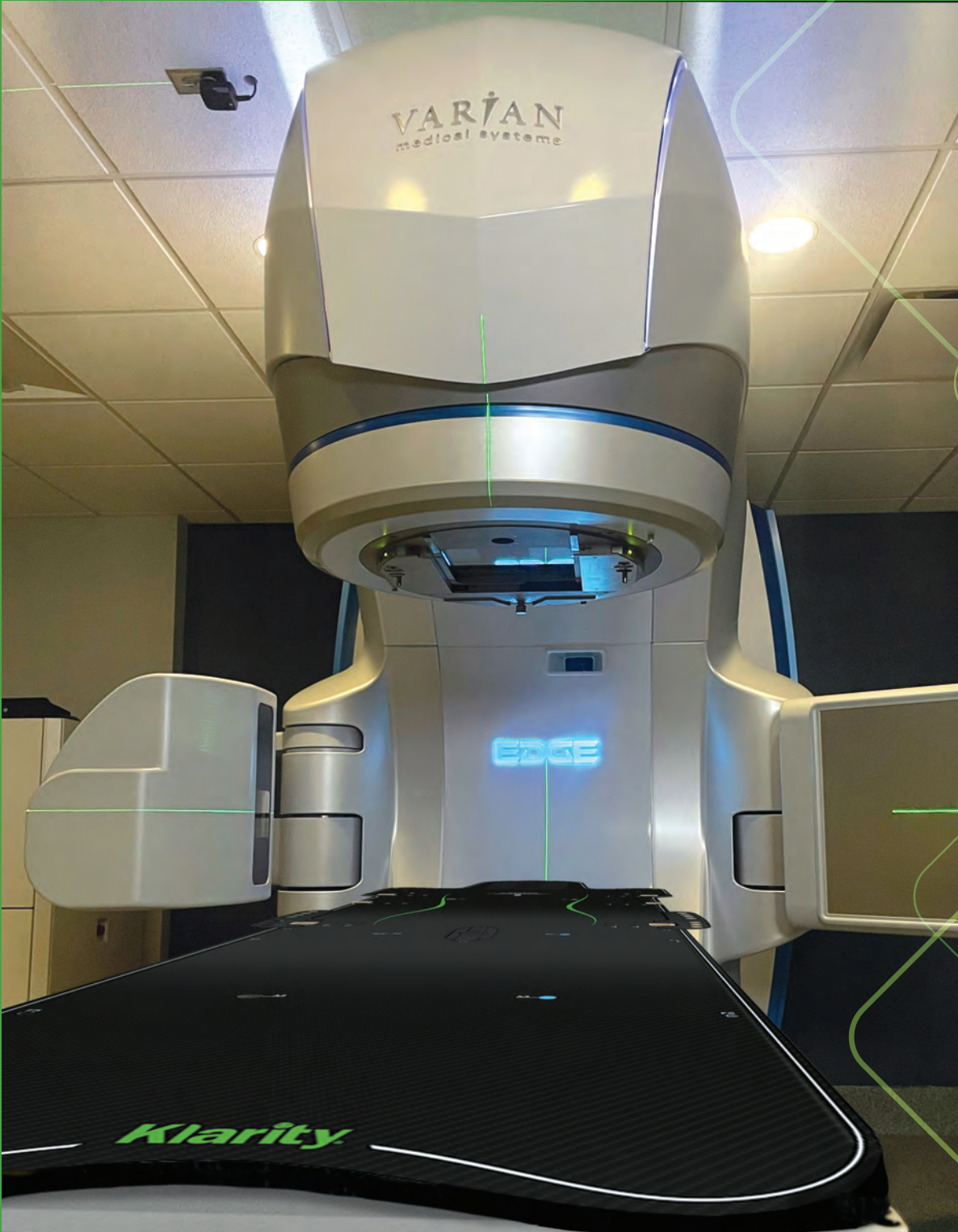
Compatible with the  
Klarity Optek™ Overlay



**RE-630EA**  
Insert-Lock Aluminum Optek™ Indexing Bar  
6mm thickness  
Compatibility: iBEAM®, Novalis, and TomoTherapy® Couch Tops



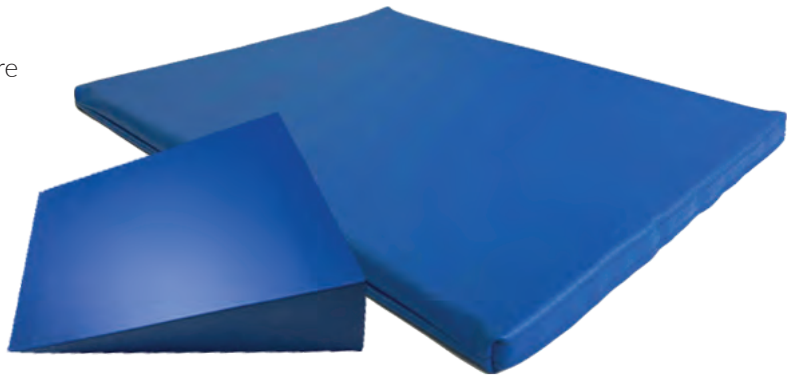
**RE-7EW**  
Turn-Lock Aluminum Optek™ Indexing Bar  
6mm thickness  
Compatibility: Varian Couch Tops



# GENERAL TREATMENT ACCESSORIES

## TABLE PADS & SUPPORT BLOCKS

Klarity's table pads, wedges, blocks and straps are engineered for long-term, multi-patient use. They feature durable, easily-cleanable surfaces that slide smoothly beneath patients while maintaining stability.



### Table Pads



**KRA1-5266**  
Short Table Top Pad  
52cm x 66cm  
25mm



**KRA1-52100**  
Medium Table Top Pad  
52cm x 100cm  
25mm



**KRA1-52150**  
Long Table Top Pad  
52cm x 150cm  
25mm

### Support Blocks



**KFB-005**  
Support Block 1  
18cm x 25.5cm  
2.5cm



**KFB-006**  
Support Block 2  
18cm x 25.5cm  
5cm



# GENERAL TREATMENT ACCESSORIES

## WEDGE CUSHIONS & STRAPS

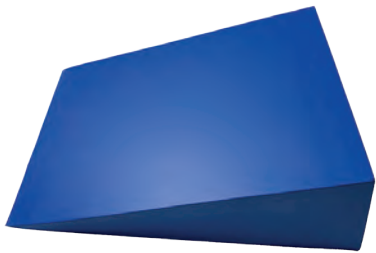
### Wedge Cushions



**KFB-001**  
Wedge Cushion 1  
51cm (length) x 25.5cm (width)  
x 18cm (height)  
35° & 55°



**KFB-002**  
Wedge Cushion 2  
51cm (length) x 40.6cm (width)  
x 30.5cm (height)  
37° & 53°



**KFB-003**  
Wedge Cushion 3  
51cm (length) x 76cm (width)  
x 40.6cm (height)  
28° & 62°



**R516-229L**  
Green Bolster  
17in (length) x 8in (width)  
x 6.5in (height)

### Straps



**R565-603C**  
Green Cleanable Straps  
183cm x 12.7cm



**R565-607C**  
Black Cleanable Straps  
183cm x 25.5cm

# Supporting the Future of Cancer Care

At Klarity, we believe in investing in the next generation of Radiation Therapists. By donating equipment to schools and training programs, we give students the opportunity to practice, learn, and build confidence before stepping into real-world clinical settings.

“I want to express our sincere gratitude to you and the Klarity team for your incredible generosity. Your support means so much to our program, and we are genuinely excited to integrate these resources into our classroom and lab settings. These tools will undoubtedly enhance the educational experience for our students and help them prepare for success in the field.

We truly appreciate that Klarity has a program dedicated to supporting educational initiatives like ours. It speaks volumes about your commitment to the future of radiation therapy and the professionals who will drive it forward.”

—Angela Oliveira, MPA, RT(T)  
Kakos School of Arts and Sciences  
Riverdale, NY

Klarity is proud to support students as they develop the skills that will help improve patient care for years to come.

For more information, email us at  
[info@klaritymedical.com](mailto:info@klaritymedical.com)

## OVENS

### IN THIS SECTION:

Ovens..... 100

Oven Accessories..... 102



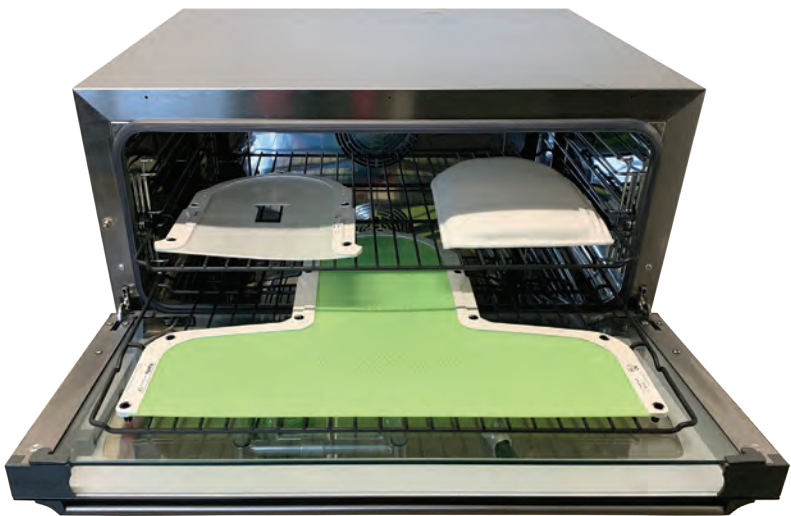
# KLARITY OVENS

A better, safer heating method

## Dry-Heat Technology for Thermoplastics

Klarity pioneered dry-heat technology to efficiently prepare all standard thermoplastic masks, Klarity Cushions™, and bolus materials. By eliminating water, dry-heat ovens heat devices faster, reduce cross-contamination risk, and offer warm, dry devices that patients find more comfortable.

### The Klarity AirFlow™ Oven



KEL-2400	KEL-1400
Klarity AirFlow™ Oven (220V)	Klarity AirFlow™ Oven (110V)
Outer dimensions: 88cm (length) x 80cm (width) x 41cm (height)	
Inner dimensions: 48cm (length) x 64cm (width) x 27cm (height)	
Weight: 40kg	



### Why Choose Dry Heat?

- **Efficiency:** Ovens heat up quickly and eliminate the need for drying, streamlining workflow
- **Safety:** No hot water means reduced bacterial risk and lower chance of cross-contamination
- **Comfort:** A dry, warm mask is gentler on patients than a hot, wet mask

#### Faster Heating

Reaches 165°F in under ten minutes. Masks heat in just 3–5 minutes, while Klarity Cushions™ are ready in about 10–12 minutes.

#### Simple, Flexible Operation

A digital interface allows precise temperature control. The high-powered fan ensures consistent heat distribution.

#### Designed for Multiple Devices

Double racks accommodate Head and Shoulder Masks or multiple smaller devices. Non-stick Teflon coating means you can load masks directly with no fuss.

#### Easy to Clean and Move

A wipe-down interior and optional stainless-steel cart simplify maintenance and mobility.

“Once we received our Klarity oven, we put our water bath in storage and never used it again!”

—Sarah Steffen, BAS., R.T.(T)  
Swedish Cancer Institute – Issaquah  
Issaquah, WA

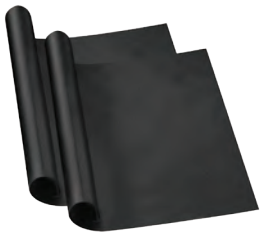
# OVEN ACCESSORIES



**KEL-C100**  
AirFlow™ Oven Cart  
91.5cm (width) x 76cm (depth) x 71cm (height)  
Weight: 23kg



**KEL-1200RK**  
Supplemental Oven Rack



**KEL-LINER**  
Non-Stick Teflon Oven Liners  
43cm x 63.5cm



**KEL-113**  
AirFlow™ CounterMount  
Countertop extender for the AirFlow Oven  
41.25cm (length) x 3.8cm (width) x 1.9cm (height)

**INCLUDED:**  
The CounterMount comes as a complete kit with two stainless steel counter extenders, all hardware, multiple bolts for varying countertop thicknesses, and an installation template

## Explore More Oven Resources

- **Scientific Article:** Learn about waterbath contamination in the 2014 *Radiation Therapist* article by Brewer, Ravine, and Bru.
- **Instructional Video:** Watch a step-by-step guide on preparing devices with dry-heat ovens.
- **CE Class:** Earn continuing education credits while mastering best practices in thermoplastic preparation.
- **FAQ:** Visit [www.klaritymedical.com/ovens](http://www.klaritymedical.com/ovens) for answers to common questions.



Klarity Medical Products, LLC  
600 Industrial Parkway  
Heath, OH 43056

Tel: 740-788-8107

[sales@klaritymedical.com](mailto:sales@klaritymedical.com)